



Doosan Infracore
Portable Power

PARTS MANUAL

LSCWKUB-60Hz-T4F (E83)
LSCWKUB-50Hz-T4F (E84)
LSCWKUB-60Hz-T4F (G08)
LSCWKUB-50Hz-T4F (G09)

LIGHT TOWER

Doosan Infracore Portable Power
1293 Glenway Drive
Statesville, N.C. 28625
DoosanPortablePower.com

Book: 46611282 (07/2015) Revision G

TABLE OF CONTENTS

Parts Book

TITLE	PAGE
Parts List	
Frame and Drawbar	6
Frame and Drawbar	7
Running Gear	8
Running Gear	9
Alternator and Mounting - 60Hz	10
Alternator and Mounting - 50Hz	11
Alternator Internal Parts - 60 Hz	12
Alternator Internal Parts - 60 Hz	13
Alternator Internal Parts - 50 Hz	14
Alternator Internal Parts - 50 Hz	15
Engine Assembly and Mounting	16
Engine Assembly and Mounting	17
Fuel Tank	18
Fuel Tank	19
Cooling System	20
Cooling System	21
Engine Exhaust	22
Air Intake	23
Control Panel - 60 Hz With Receptacles	24
Control Panel - 60 Hz With Receptacles	25
Control Panel - 50 Hz	26
Control Panel - 50 Hz	27
Battery and Ballast Box Mounting	28
Battery and Ballast Box Mounting	29
Tower Brackets	30
Tower Brackets	31
Enclosure	32
Enclosure	33
Decal Location - Exterior	34
Decal Location - Exterior	35
Lamp / Socket Assembly	36
Lamp / Socket Assembly	37
Lights and Mounting	38
Bottom Tower Assembly	39
Middle Tower Assembly	40
Top Tower Assembly	41
Cable Routing	42
Recommended Spare Parts	43

Wiring Diagrams

Parts Book



Parts Ordering

GENERAL

This publication, which contains an illustrated parts breakdown, has been prepared as an aid in locating those parts which may be required in the maintenance of the unit. Always insist on genuine Doosan parts for your unit.

Doosan Infracore Portable Power can bear no responsibility for injury or damages resulting directly from the use of non-approved repair parts.

Doosan Portable Power service facilities and parts are available worldwide. Consult local yellow pages or visit: www.doosanportablepower.com.

Special order parts may not be included in this manual. Contact the Portable Power Parts Department with the unit serial number for assistance with these special parts.

Description

The illustrated parts breakdown illustrates and lists the various assemblies, subassemblies and detailed parts which make up this particular machine. This covers the standard models and the more popular options that are available.

In referring to the rear, the front or to either side of the unit, always consider the drawbar end of the unit as the front.

Standing at the rear of the unit facing the drawbar (front) will determine the right and left sides.

Fasteners

Both SAE/inch and ISO/metric hardware have been used in the design and assembly of these units. In the disassembly and reassembly of parts, extreme care must be taken to avoid damaging threads by the use of wrong fasteners.

How To Order

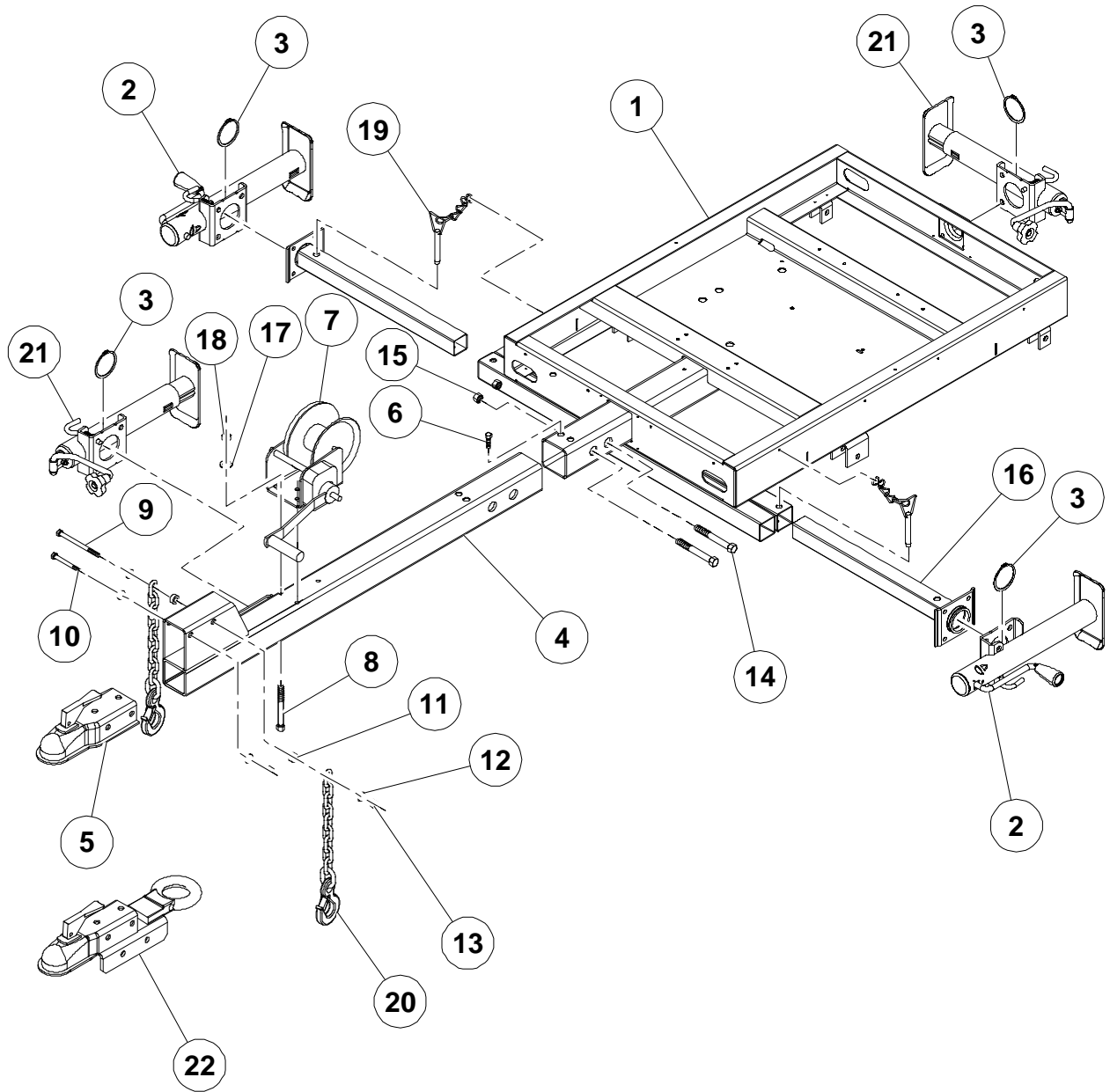
Always specify the model and serial number of the unit.

Specify the part number and description.



Parts List

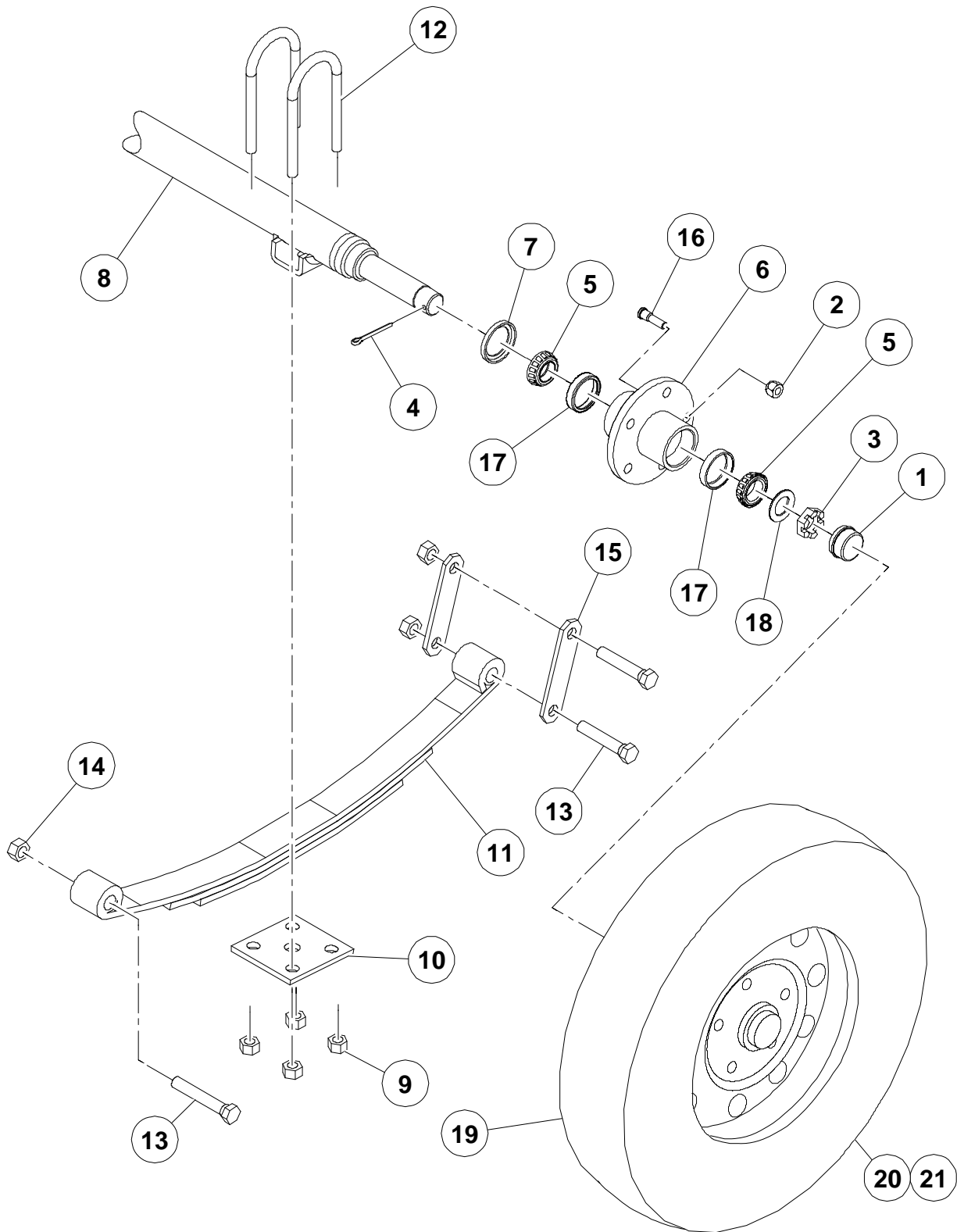
Frame and Drawbar



Frame and Drawbar

ITEM	COMM. NO.	DESCRIPTION	QTY	DIMENSIONS/NOTES
1	46599505	Frame, LSCWKUB	1	
2	46604799	Jack, Sidewind	2	
3	46604839	Snap Ring, Jack	4	
4	46616919	Drawbar	1	
5	46556150	Coupler, 2" Ball	1	
6	35279025	Screw, Taptite M08 - 1.25 X 20	2	
7	46656882	Winch, Manual	1	
8	96726435	Screw, Hex M8 - 1.25 X 100	3	
9	96715065	Screw, Hex M12 - 1.75 X 150	1	
10	96727896	Screw, Hex M12 - 1.75 X 110	1	
11	36923241	Spacer, Steel 11.1mm	1	
12	95935003	Washer, Flat Plain Type A Narrow 1/2"	4	
13	35304047	Nut, Hex Lock M12 -1.75	2	
14	96727896	Screw, Hex M12 - 1.75 X 110	2	
15	35304047	Nut, Hex Nylon Insert M12 - 1.75	2	
16	46604840	Tube, Outrigger	2	
17	95935037	Washer, Flat Plain Type A Narrow 3/8"	3	
18	96728431	Nut, Hex Nylon Insert M8 - 1.25	3	
19	36848224	Pin, Outrigger	2	
20	22144521	Assembly, Chain/Hook 5/16"	2	
21	46622559	Jack, Top Wind	2	
		Option		
22	54518758	Hitch, Dual	1	
		Not Shown		
	46546594	Harness, Trailer 2-Light with 4-Pin Connector	1	

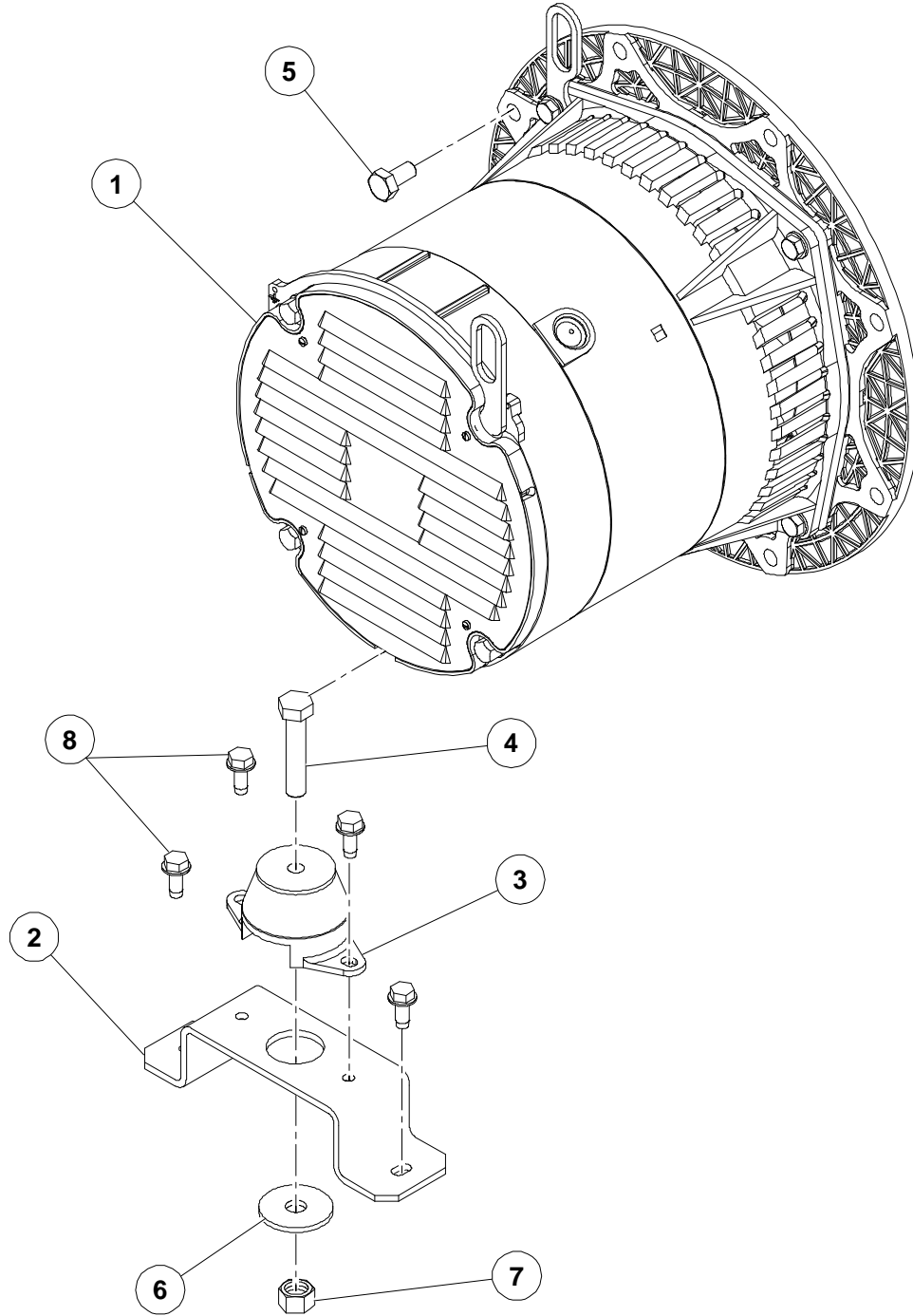
Running Gear



Running Gear

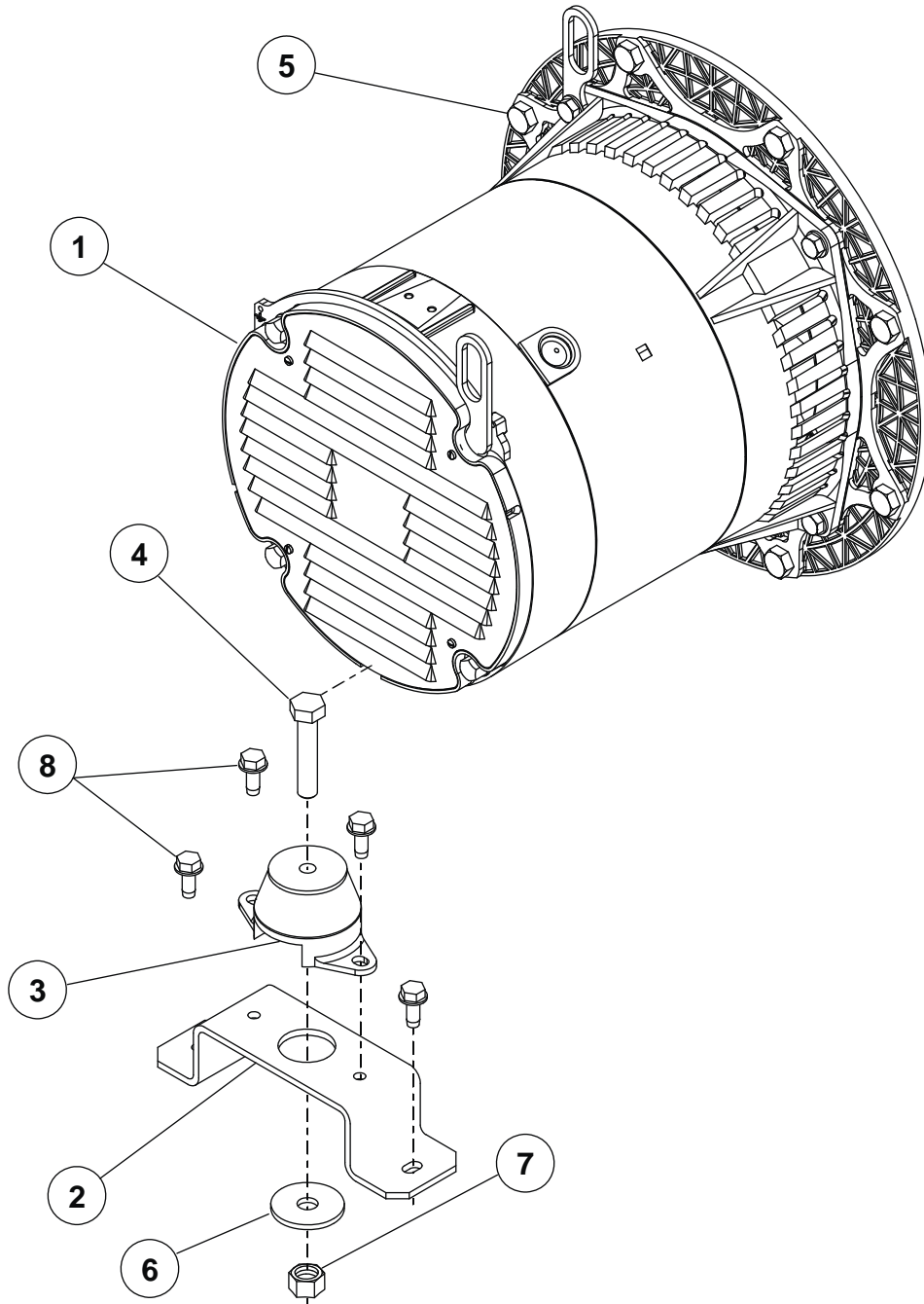
ITEM	COMM. NO.	DESCRIPTION	QTY	DIMENSIONS/NOTES
1	22885073	Cap, Dust	2	
2	35315274	Nut, Wheel	10	
3	22885057	Nut, Spindle	2	
4	22885065	Pin, Cotter	2	
5	22885016	Cone, Bearing Outer	4	
6	46544540	Assembly, Hub	2	
7	46544557	Seal, Grease	2	
8	46544565	Beam, Axle	1	
9	22885115	Nut, U-Bolt	8	
10	46544532	Plate, Tie	2	
11	46544516	Spring, Double Eye	2	
12	46544524	U-Bolt	4	
13	22885131	Bolt, Shackle 9/16" - 18 X 3-1/2"	6	
14	22888309	Nut, Shackle Bolt 9/16" - 18	6	
15	46544508	Link, Shackle	4	
16	22885081	Stud, Wheel 9/16" - 18 X 3"	4	
17	22885024	Cup, Bearing Outer	4	
18	22885040	Washer, Spindle	2	
19	22246268	Tire, ST175/80D13	2	
20	46664305	Wheel, 13"	2	
21	35282565	Stem, Valve	2	

Alternator and Mounting - 60Hz



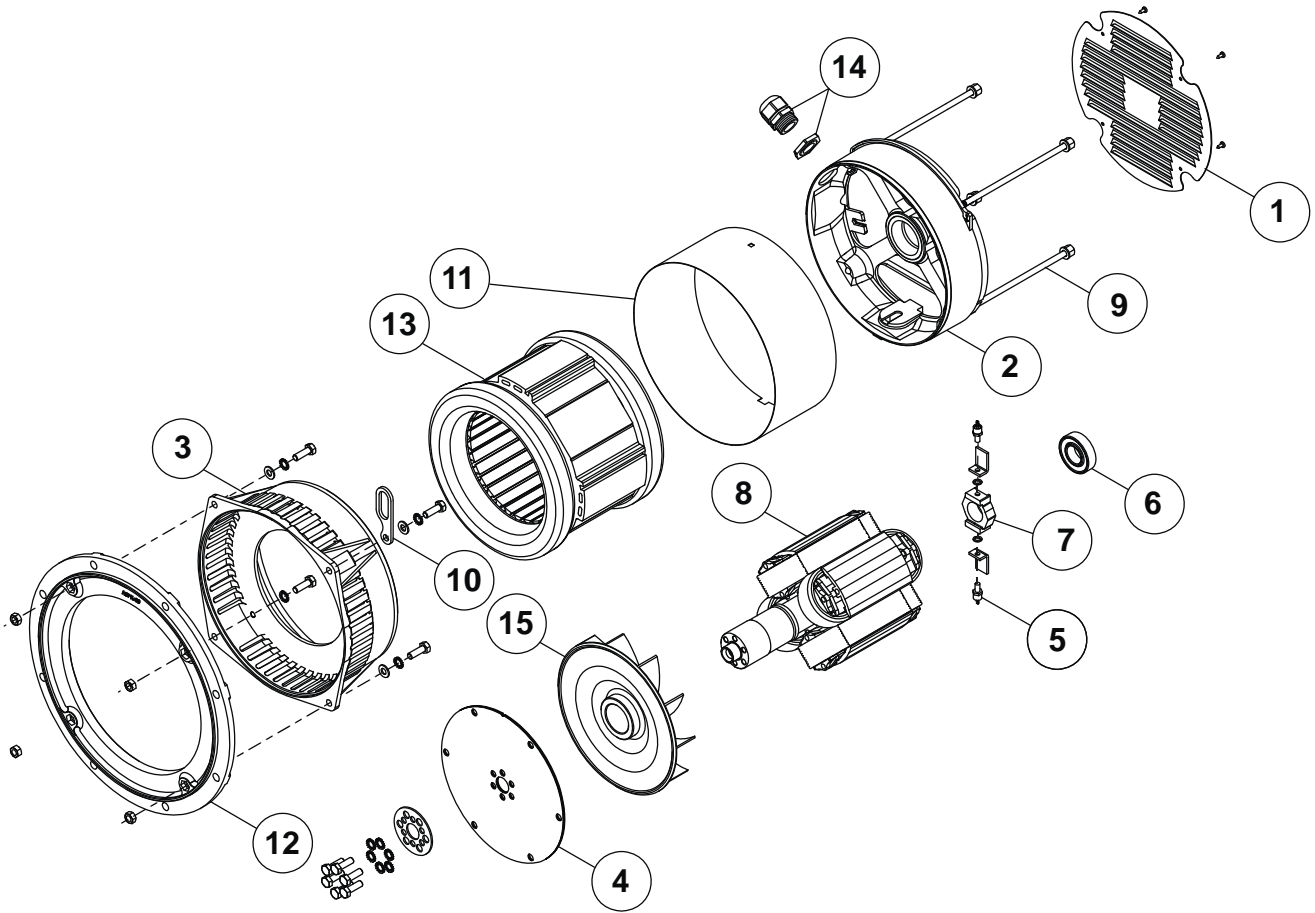
ITEM	COMM. NO.	DESCRIPTION	QTY	DIMENSIONS/NOTES
1	46597699	Alternator, 6kW 60 Hz	1	
2	46497335	Support, Alternator	1	
3	36875565	Isolator, 250 lb.	1	
4	36776128	Screw, Hex M12 - 1.75 X 60	1	
5	36786671	Screw, Hex M10 - 1.25 X 20	8	
6	54429295	Washer, Snubbing	1	
7	35304047	Nut, Hex Nylon Insert M12 - 1.75	1	
8	35279025	Screw, Taptite M08 - 1.25 X 20	4	

Alternator and Mounting - 50Hz



ITEM	COMM. NO.	DESCRIPTION	QTY	DIMENSIONS/NOTES
1	46597700	Alternator, 6kW 50 Hz	1	
2	46497335	Support, Alternator	1	
3	36875565	Isolator, 250 lb.	1	
4	36776128	Screw, Hex M12 - 1.75 X 60	1	
5	36786671	Screw, Hex M10 - 1.25 X 20	8	
6	54429295	Washer, Snubbing	1	
7	35304047	Nut, Hex Nylon Insert M12 - 1.75	1	
8	35279025	Screw, Taptite M08 - 1.25 X 20	4	

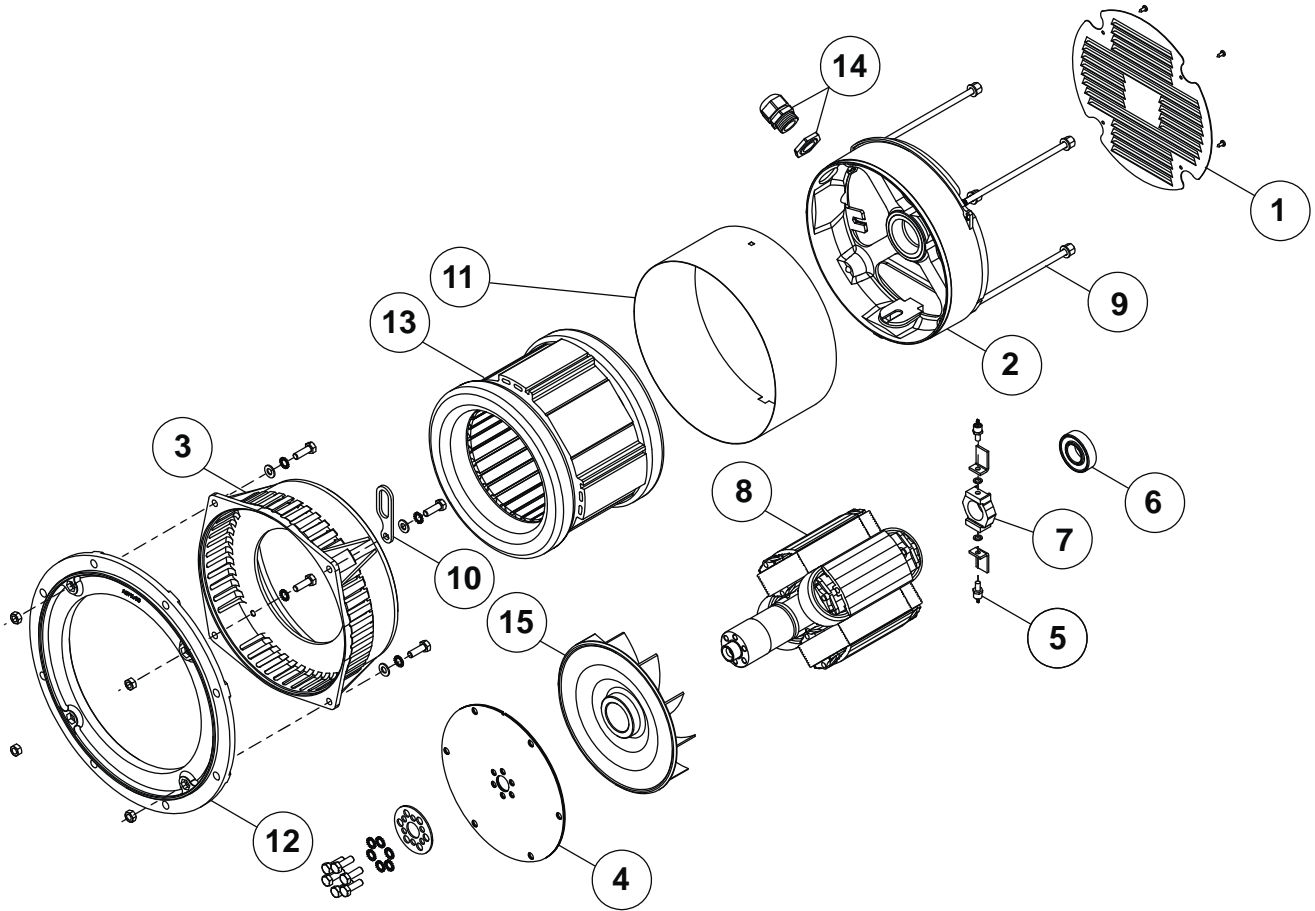
Alternator Internal Parts - 60 Hz



Alternator Internal Parts - 60 Hz

ITEM	COMM. NO.	DESCRIPTION	QTY	DIMENSIONS/NOTES
1	23278906	Seal, Rear	1	
2	23278914	Bracket, NDE	1	
3	23278922	Bracket, DE	1	
4	23278989	Plates, Disc Ring	3	
5	23278963	Diodes	2	
6	23278955	Bearing, Rear	1	
7	23279037	Support, Diode Heat Sink	1	
8	23278930	Assembly, Rotor	1	
9	23278971	Bolt, Cover Stay	1	
10	23276052	Hook, Lifting	1	
11	23279003	Band, Closing	1	
12	23279011	Flange, Interchangeable	1	
13	23279029	Stator, Wound	1	
14	23279045	Nut, Cable Gland	1	
15	23278948	Fan	1	
		Not Shown		
	46543104	Board, Terminal	1	
	23279060	Cover, Top	1	

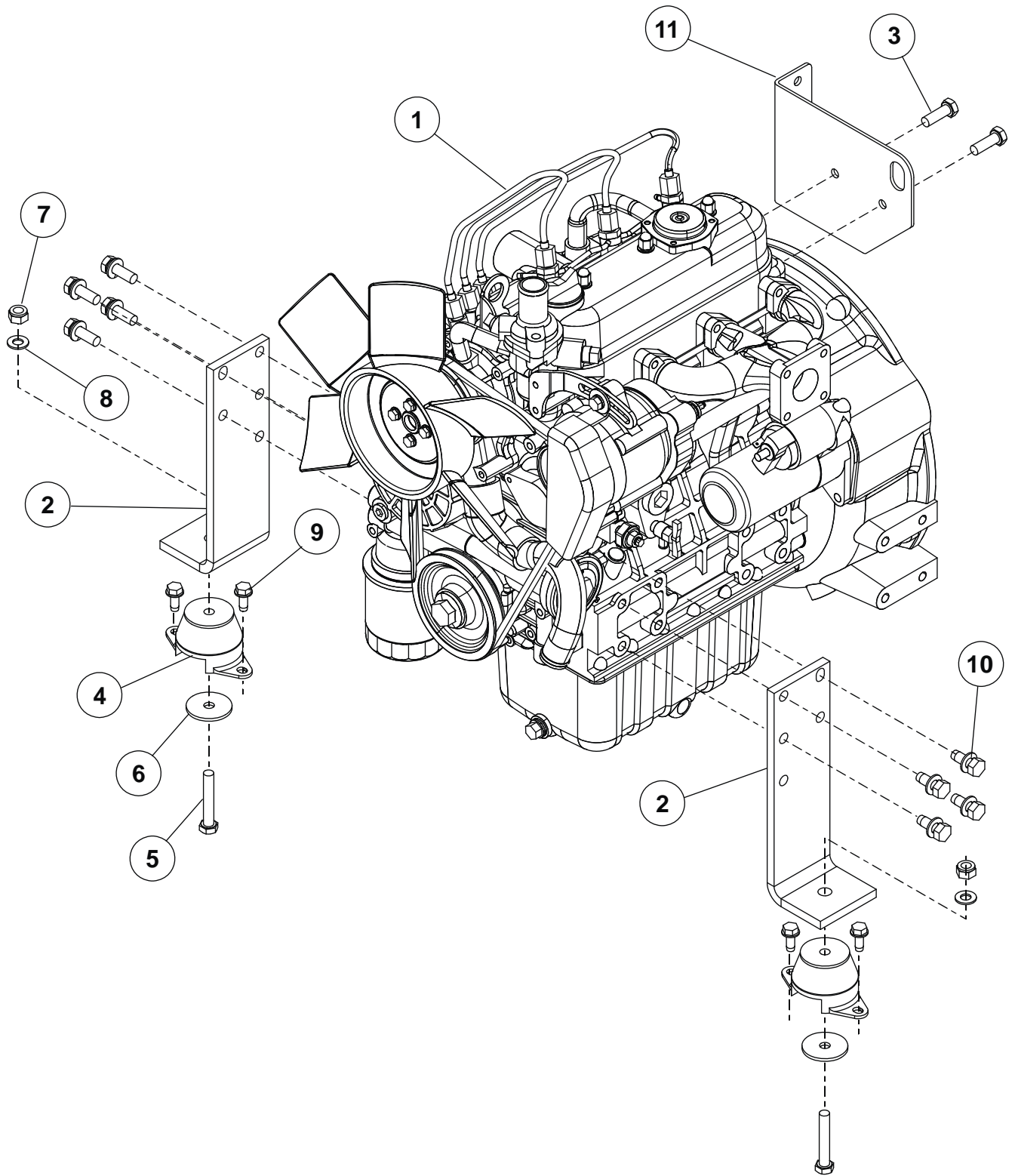
Alternator Internal Parts - 50 Hz



Alternator Internal Parts - 50 Hz

ITEM	COMM. NO.	DESCRIPTION	QTY	DIMENSIONS/NOTES
1	23278906	Seal, Rear	1	
2	23278914	Bracket, NDE	1	
3	23278922	Bracket, DE	1	
4	23278989	Plates, Disc Ring	3	
5	23278963	Diodes	2	
6	23278955	Bearing, Rear	1	
7	23279037	Support, Diode Heat Sink	1	
8	46543054	Assembly, Rotor	1	
9	46543062	Bolt, Cover Stay	1	
10	23276052	Hook, Lifting	1	
11	46543088	Band, Closing	1	
12	23279011	Flange, Interchangeable	1	
13	46543096	Stator, Wound	1	
14	23279045	Nut, Cable Gland	1	
15	23278948	Fan	1	
		Not Shown		
	46543104	Board, Terminal	1	
	23279060	Cover, Top	1	

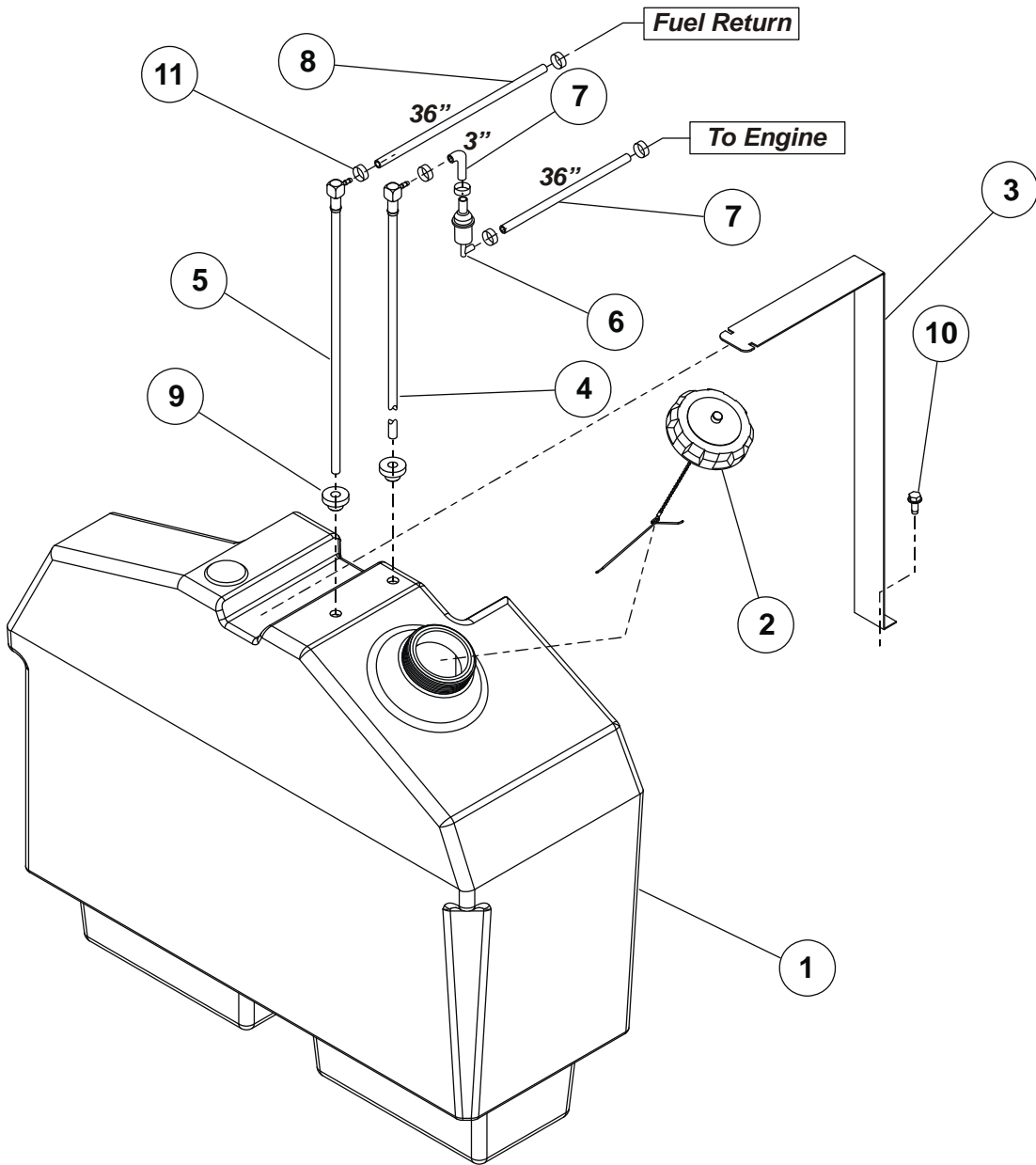
Engine Assembly and Mounting



Engine Assembly and Mounting

ITEM	COMM. NO.	DESCRIPTION	QTY	DIMENSIONS/NOTES
1	46597439	Engine, Kubota 1005 Tier 4 (E83, E84)	1	Supplied with Engine
	46678671	Engine, Kubota 1005 Tier 4 (G08, G09)		
2	46541504	Support, Engine	2	
3		Screw, Hex M08	2	
4	46548186	Isolator, 180 lb.	2	
5	96730411	Screw, Hex M10 -1.5 X 60	2	
6	36899037	Washer, Snubbing	2	
7	35273366	Nut, Hex Nylon Insert M10 - 1.5	2	
8	95935037	Washer, Flat Plain Type A Narrow 3/8"	2	
9	35279025	Screw, Taptite M08 - 1.25 X 20	4	
10	46551868	Screw, M10 - 1.25 X 30 w/ Captive Lock Washer	8	
11	46601140	Bracket, Engine Intake	1	If a New Engine Harness is Required, Control Panel Harness 46623221 (60 Hz Units) or 46623223 (50 Hz Units) Must Also be Ordered or the Unit will not Function Properly.
		Not Shown		
	46623222	Harness, Kubota Engine	1	
		Option		
	22907810	Heater, Block 400W 120V		
		Spare Parts		
	36870574	Filter, Oil		
	36870566	Filter, Fuel		
	15908098	Belt, Engine Fan		
	36888170	Alternator, Engine		
	22986517	Starter, Kubota Engine		
	36888501	Fan, Kubota Engine		
	22776892	Solenoid, Fuel Stop 2-Wire		
	22221246	Adapter, Fuel Solenoid		

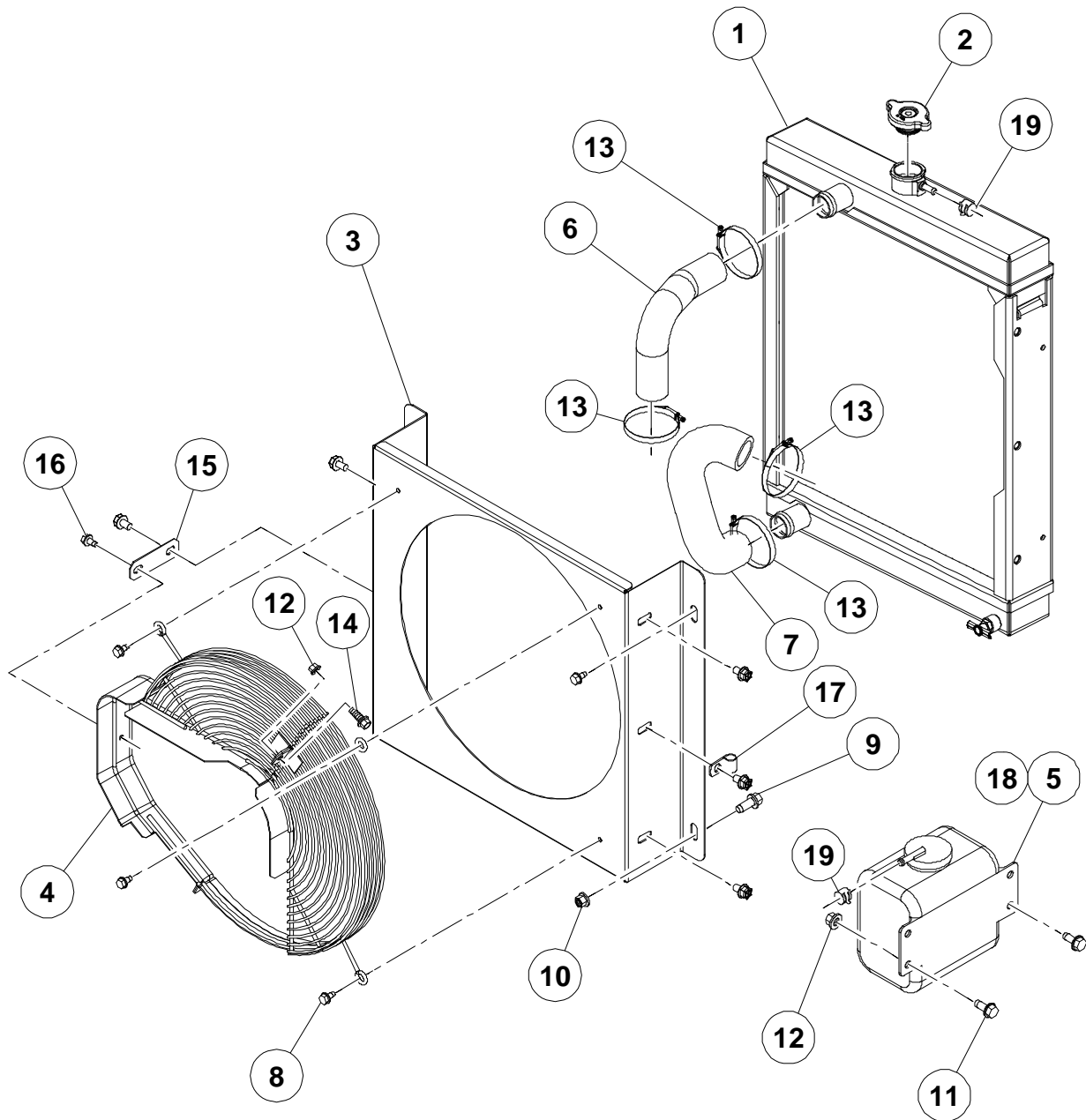
Fuel Tank



Fuel Tank

ITEM	COMM. NO.	DESCRIPTION	QTY	DIMENSIONS/NOTES
1	46601201	Tank, Fuel	1	
2	46592220	Fuel Cap, Green Vented with Tether	1	
3	46604419	Bracket, Fuel Tank Mounting	1	
4	46603299	Tube, Fuel Pickup	1	
5	46610523	Tube, Fuel Return	1	
6	36845493	Filter, Inline Fuel	1	
7	35363498	Hose, Fuel 5/16" I.D.		As Noted
8	46616639	Hose, Fuel 3/16" I.D.		As Noted
9	35384577	Bushing, Nitrile	2	
10	35279025	Screw, Taptite M08 - 1.25 X 20	1	
11	35296342	Clamp, Hose 1/4" I.D.	6	

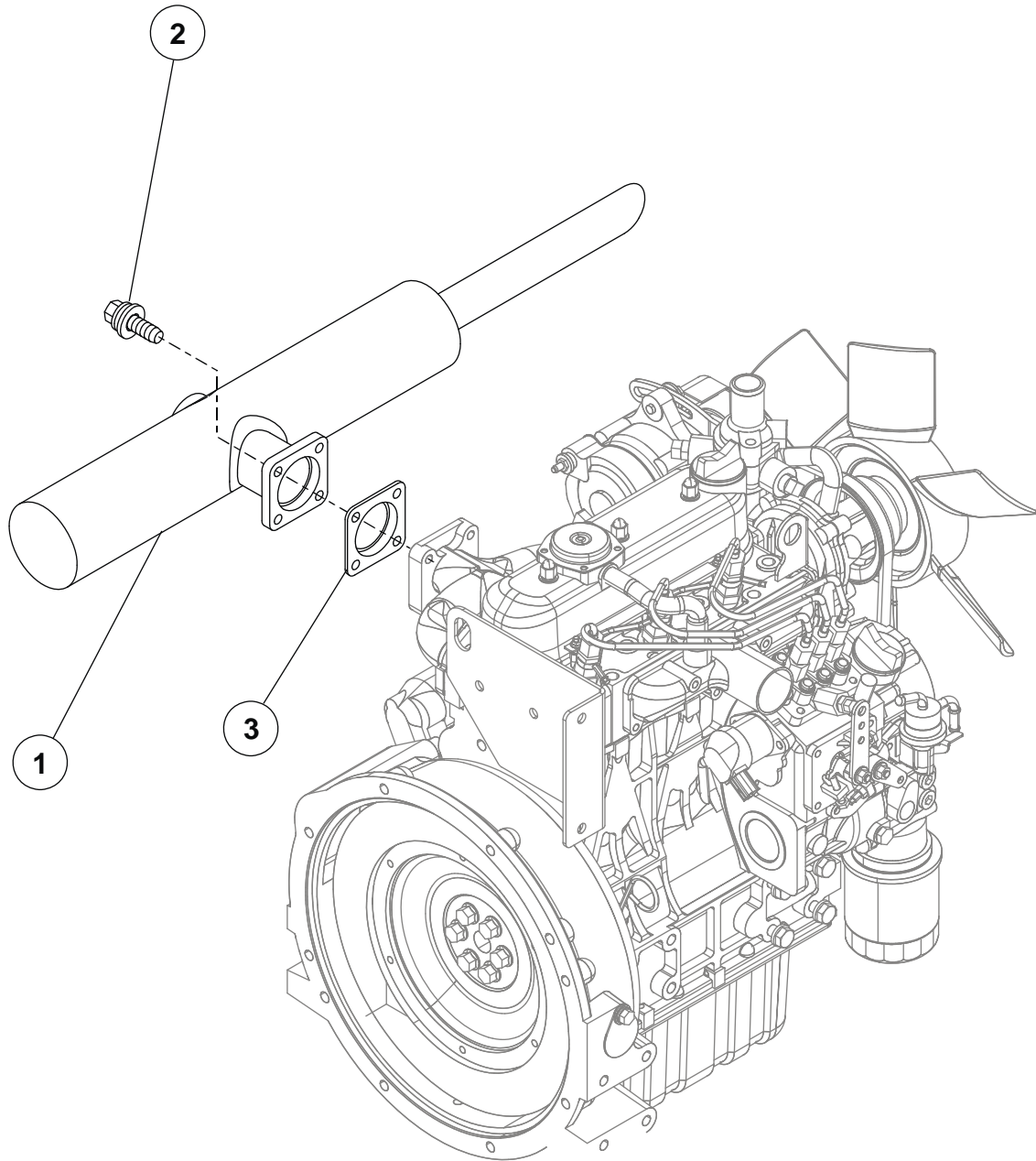
Cooling System



Cooling System

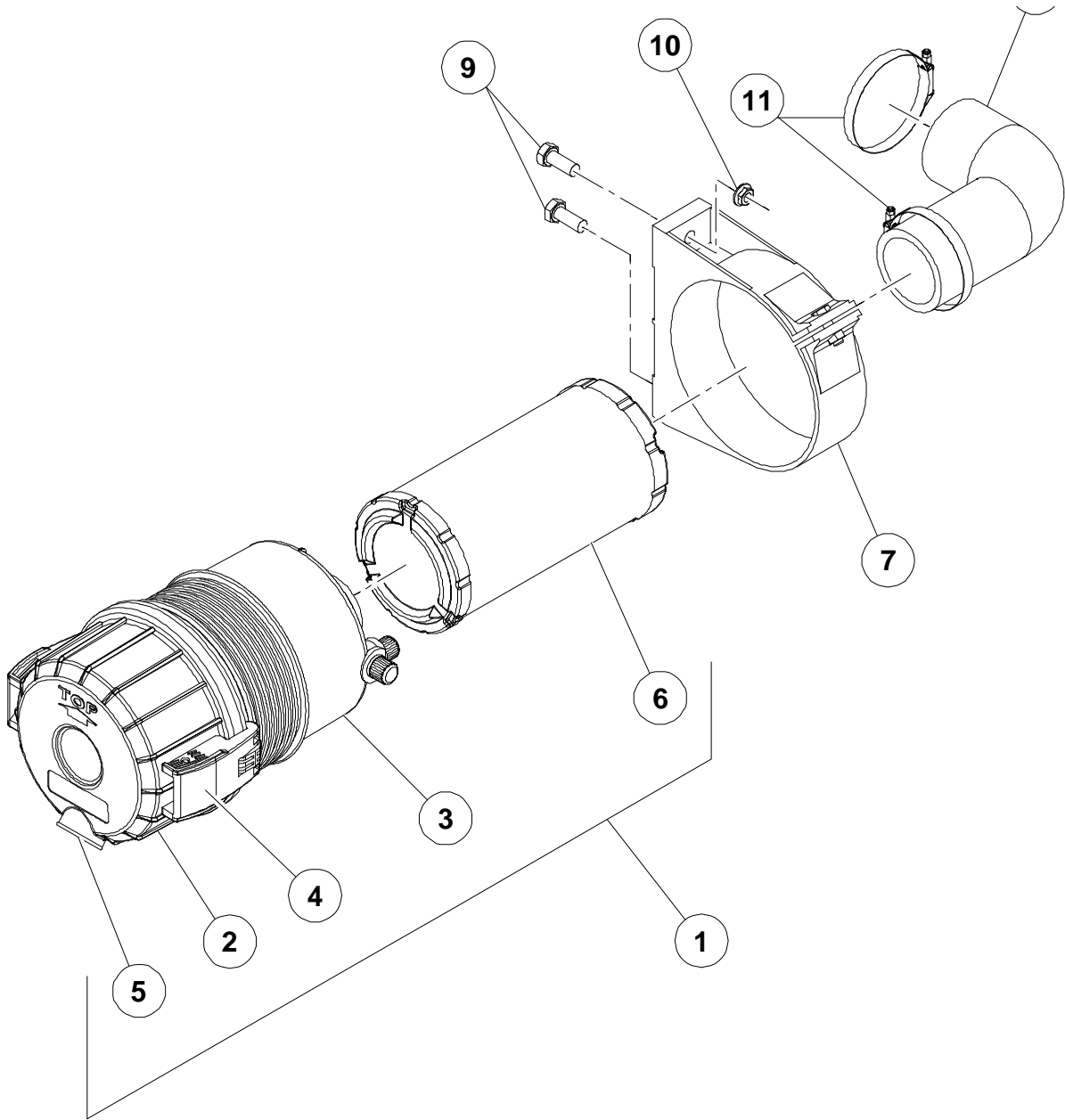
ITEM	COMM. NO.	DESCRIPTION	QTY	DIMENSIONS/NOTES	
1	46605079	Assembly, Radiator	1	Includes Mounting Screws	
2	46548715	Cap, Radiator Pressure 13 PSI	1		
3	46601141	Bracket, Radiator Mounting	1		
4	46546032	Guard, Fan	1		
5	36884948	Bottle, Recovery	1		
6	46541561	Hose, Radiator Upper	1		
7	46673819	Hose, Radiator Lower	1		
8	92368687	Screw, Tapping M6 - 1.0 X 14	3		
9	36889608	Screw, Hex Flange M8 - 1.25 X 25	4		
10	36881886	Nut, Hex Flange M8 - 1.25	4		
11	35300771	Screw, Tapping M6 - 1.0 X 20	2		
12	36898104	Nut, Hex Flange M6 - 1.0	3		
13	95235031	Clamp, Hose Worm Drive	4		
14	36898096	Screw, Hex Flange M6 - 1.0 X 20	1		
15	46547295	Bracket, Fan Guard	1		
16	36797652	Screw, M6 - 1.0 X 12	1		
17	35225093	Clamp, 1/2" Rubber Coated Support	1		for Overflow Hose
18	36136562	Cap, Overflow	1		
19	46624261	Clamp, 7/16" Hose	2		for Overflow Hose

Engine Exhaust



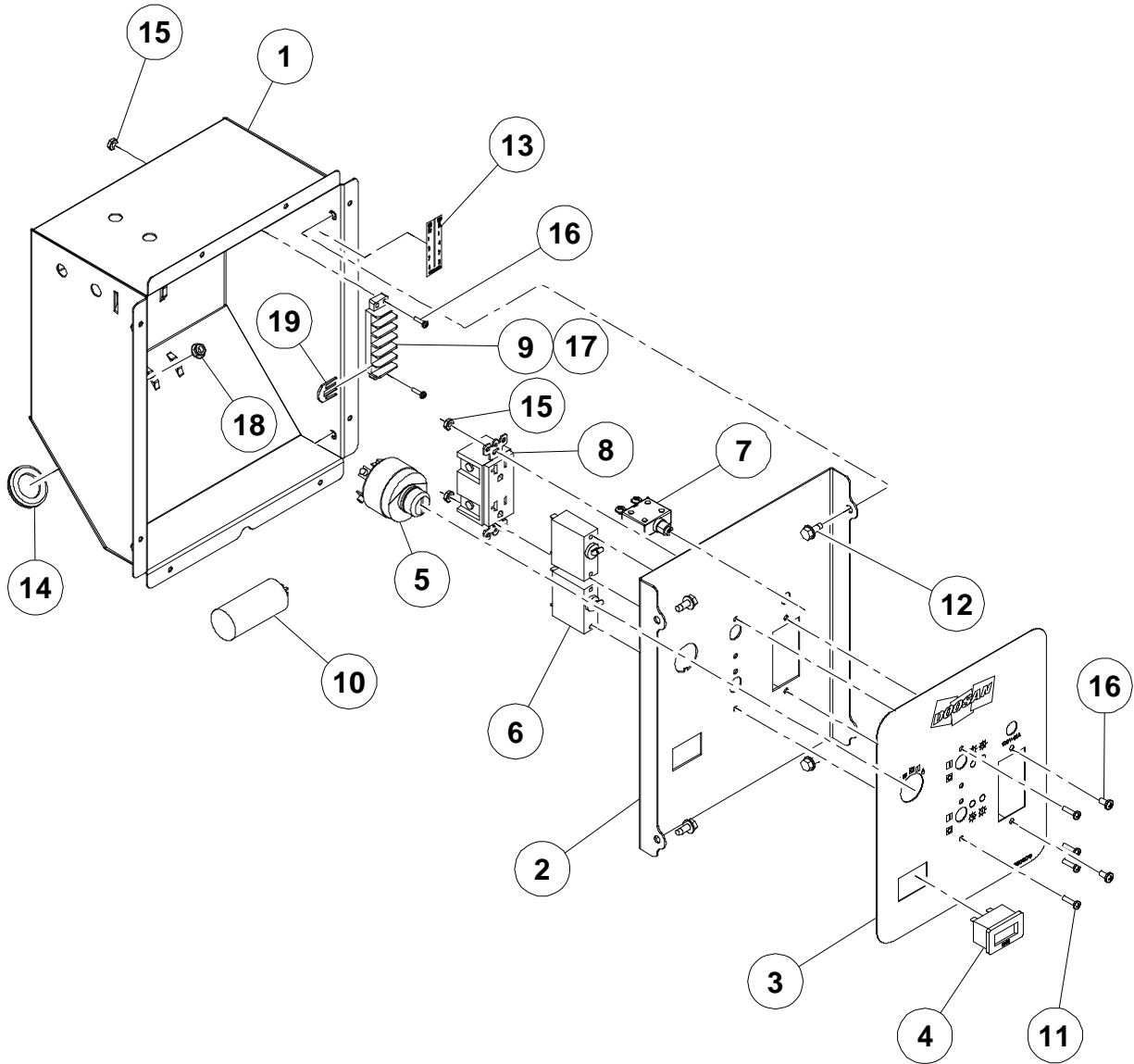
ITEM	COMM. NO.	DESCRIPTION	QTY	DIMENSIONS/NOTES
1	22258446	Muffler	1	
2		Screw, Hex M08 with Captive Washer	4	Supplied with Engine
3		Gasket, Exhaust	1	Supplied with Engine

Air Intake



ITEM	COMM. NO.	DESCRIPTION	QTY	DIMENSIONS/NOTES
1	46606879	Assembly, Air Cleaner	1	Includes Items 2 - 6
2	46613000	End Cap, Air Cleaner with Clips	1	
3	46612999	Main Body, Air Cleaner	1	
4	46613460	Attachment, Clip	2	
5	46613001	Valve, Dust Ejector	1	
6	46606880	Element, Air Filter	1	
7	46606881	Mount, Air Cleaner	1	
8	46601139	Hose, Engine Intake	1	
9	36889608	Screw, Hex Flange M08 - 1.25 X 25	2	
10	36881886	Nut, Hex Flange M08 - 1.25	2	
11	35221339	Clamp, Hose	2	

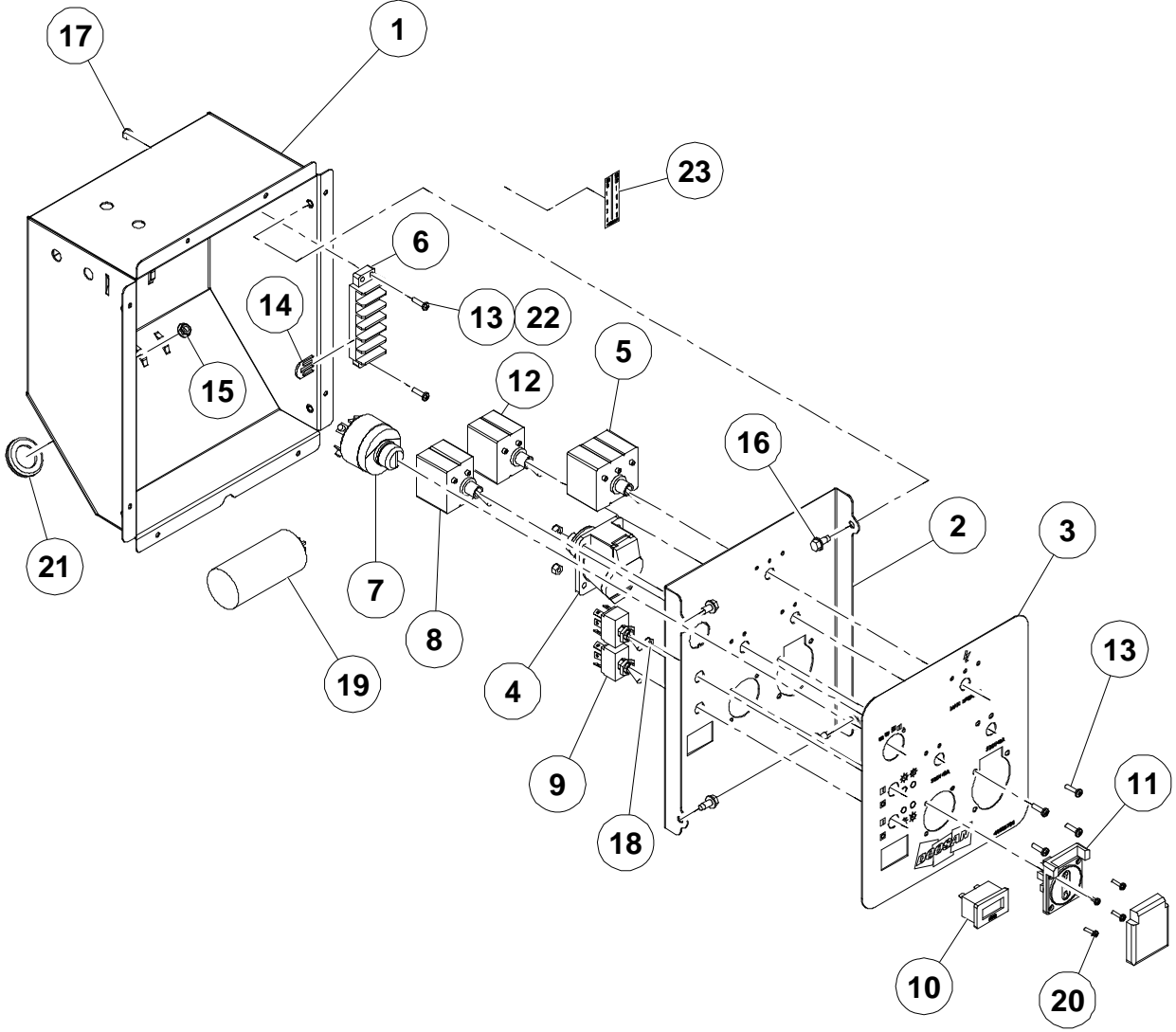
Control Panel - 60 Hz With Receptacles



Control Panel - 60 Hz With Receptacles

ITEM	COMM. NO.	DESCRIPTION	QTY	DIMENSIONS/NOTES
	46612841	Assembly, Control Box 60 Hz		Prior to S/N 470495
	46669239	Assembly, Control Box 60 Hz		
1	46611999	Enclosure, Control	1	Prior to S/N 470495
	46669241	Enclosure, Control	1	
2	46610873	Panel, Control 60 Hz	1	
3	46601579	Decal, Control Panel	1	
4	46557109	Hourmeter, Digital	1	
5	36786457	Switch, Key	1	
6	46604860	Breaker, Circuit 1-Pole 20 Amp	2	
7	46604862	Breaker, Circuit Push to Reset 15 Amp	1	
8	35371798	Receptacle, GFCI Duplex 125V 20 Amp	1	
9	46610799	Terminal Block, 6-Row	1	
10	23278997	Capacitor, 25 mf	1	
11	46620110	Screw, Pan Head Phillips #6 - 32 X 1/4"	4	
12	36898096	Screw, Tapping M06 - 1.0 X 20	4	
13	46619641	Decal, Alternator Connector	1	
14	22759278	Grommet, Blind/Plug	1	
15	95942637	Nut, Hex Nylon Insert #8 - 32	4	
16	95942553	Screw, Pan Head Phillips #8 -32 X 5/8"	4	
17	46619639	Screw, Hex Washer Head Slot, #8 - 32 X 3/8"	12	
18	36898104	Nut, Hex Flange M06 - 1.0	3	
19	46496352	Jumper, Flat Slip On	3	
		Not Shown		
	36893790	Label, ETL	1	
	46623221	Harness, Control Panel LSC	1	Prior to S/N: 470495
	46669315	Harness, Control Panel LSC	1	
		Note: if a new Control Panel Harness is required 46623222 Engine Harness Must Also be Ordered or the Unit Will Not Function Properly.		

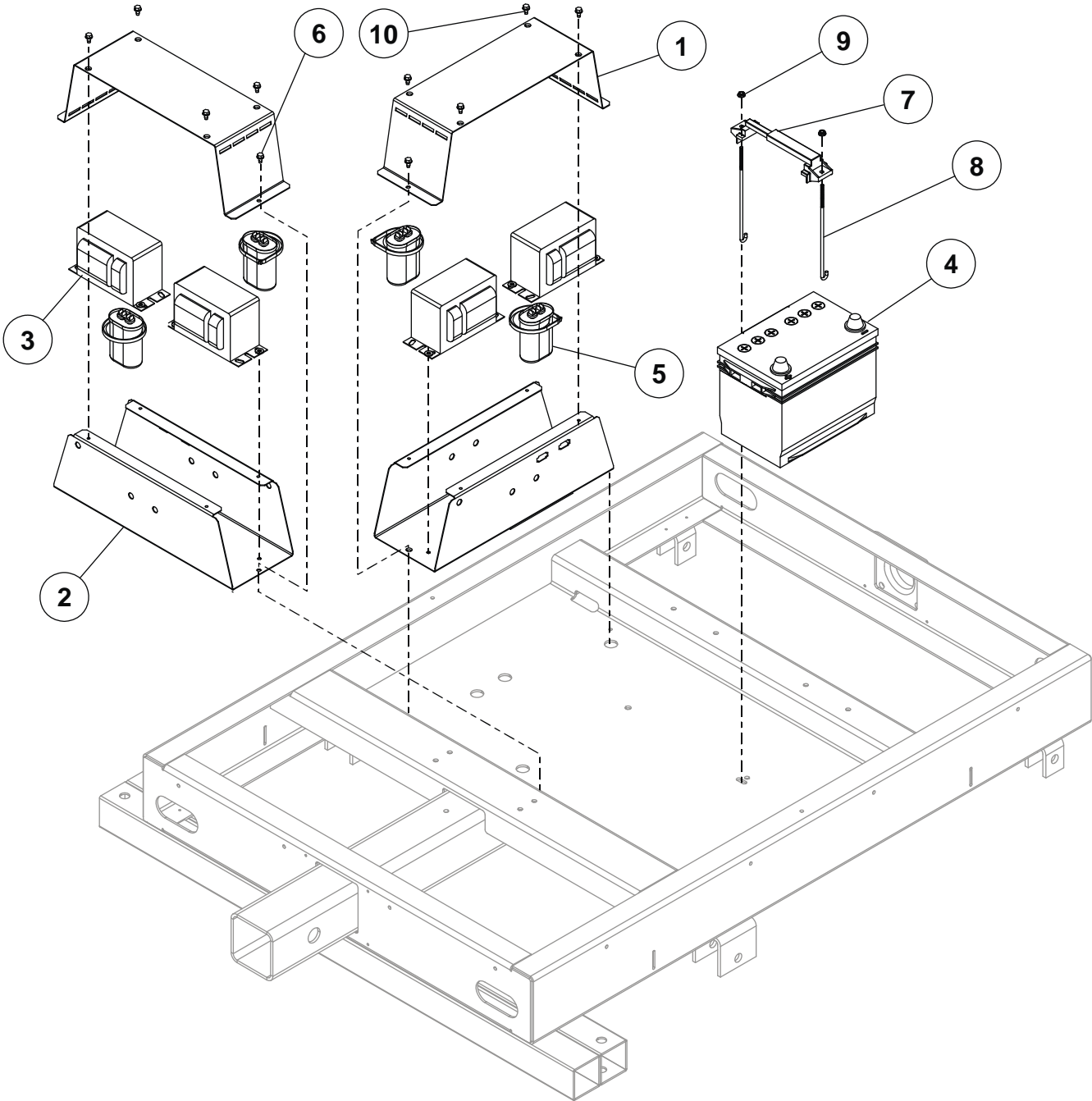
Control Panel - 50 Hz



Control Panel - 50 Hz

ITEM	COMM. NO.	DESCRIPTION	QTY	DIMENSIONS/NOTES
	46612842	Assembly, Control Box 50 Hz	1	
1	46611999	Cover, Rear	1	
2	46610874	Panel, Control 50 Hz	1	
3	46605700	Decal, Control Panel 50 Hz	1	
4	43214204	Receptacle, 3-Wire 230V 50 Hz	1	
5	36875953	Breaker, Circuit 2-Pole 25 Amp	1	
6	46610799	Terminal Block, 6-Row	1	
7	36786457	Assembly, Key Switch	1	
8	43214295	Breaker, 2-Pole 10 Amp	1	
9	46554856	Switch, Toggle DPDT 20 Amp	2	
10	46557109	Hourmeter, Digital	1	
11	43214493	Receptacle, 230V 10 Amp	1	
12	43214352	Breaker, 2-Pole 16 Amp	1	
13	95942553	Screw, Pan Head Phillips #8 - 32 X 5/8"	6	
14	46496352	Jumper, Flat Slip On	3	
15	36898104	Nut, Hex Flange M06 - 1.0	3	
16	36898096	Screw, Tapping M06 - 1.0 X 20	4	
17	95942637	Nut, Hex Nylon Insert #8 - 32	6	
18	95930517	Nut, Hex Nylon Insert #6 - 32	4	
19	46549457	Capacitor, 35 mf	1	
20	95942520	Screw, Pan Head Phillips #6 - 32 X 1/2"	4	
21	22759278	Grommet, Blind/Plug	1	
22	46619639	Screw, Hex Washer Head Slot, #8 - 32 X 3/8"	12	
23	46619641	Decal, Alternator Connect	1	
		Not Shown		
	36893790	Label, ETL	1	
	46623223	Harness, Control Panel LSC Kubota 50 Hz	1	If a new Control Panel Harness is required 46623222 Engine Harness Must Also be Ordered or the Unit Will Not Function Properly.

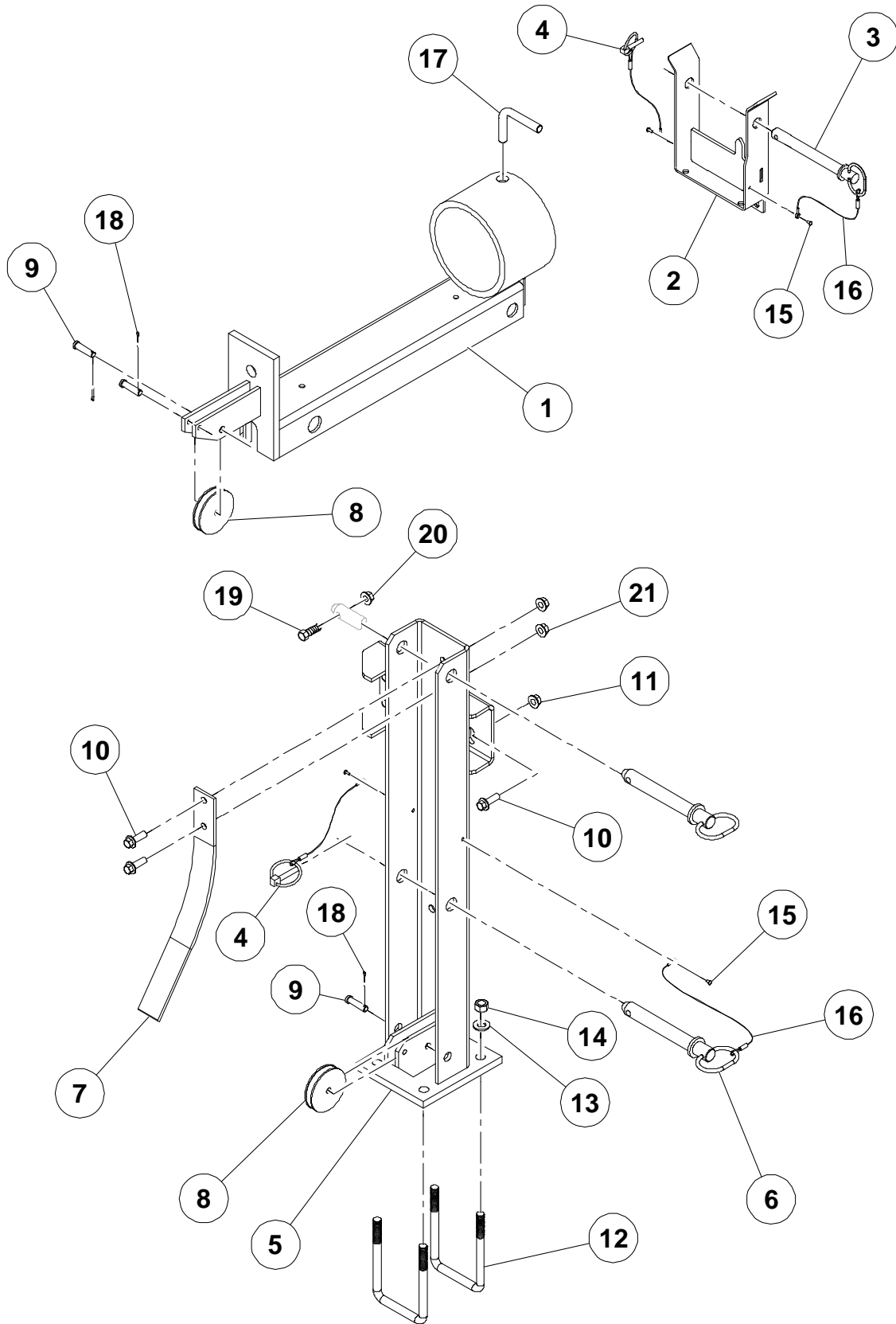
Battery and Ballast Box Mounting



Battery and Ballast Box Mounting

ITEM	COMM. NO.	DESCRIPTION	QTY	DIMENSIONS/NOTES
1	46600300	Cover, Ballast Box	2	
2	46600299	Ballast Box 60 Hz	2	Prior to S/N 470495
	46667061	Ballast Box 60 Hz	2	
	46600299	Ballast Box 50 Hz	2	
3	46600539	Ballast Advance 60 Hz	4	
	43214097	Ballast Advance 50 Hz	4	
4	22246797	Battery, 12V Group 24	1	
5	36888683	Capacitor, Ballast	4	
6	36797652	Screw, Tapping M06 - 1.0 X 12	4	
7	46548806	Assembly, Battery Holddown	1	
8	36860005	J-Bolt, 1/4" - 20 X 9-1/2"	2	
9	96737564	Nut, Hex Flange Lock M06 - 1.0	2	
10	92368687	Screw, Tapping M06 - 1.0 X 14	8	
	46600419	Assembly, Ballast Box 60 Hz		Prior to S/N 470495 Includes items 1, 2, 3, 5, 6 & 10
	46667060	Assembly, Ballast Box 60 Hz		Includes items 1, 2, 3, 5, 6 & 10
	46604219	Assembly, Ballast Box 50 Hz		Includes items 1, 2, 3, 5, 6 & 10
		Not Shown		
	46545976	Cable, Battery Negative	1	
	54388483	Strap, Ground 20" Braided	1	
	95935037	Washer, Flat Plain Type A Narrow 3/8"	1	Ground Strap to Eng Block
	46609319	Cable, Battery Positive	1	
	35225093	Clamp, Support 1/2" I.D.	1	Pos Cable to Eng Block
	95934550	Screw, Hex 3/8" - 16 X 3/4"	3	Pos Cable to Eng Block, Ground Strap to Eng Block
	46602600	Harness, Ballast LSC 50 Hz	1	
		Harness, Ballast LSC 60 Hz		Prior to S/N 470495

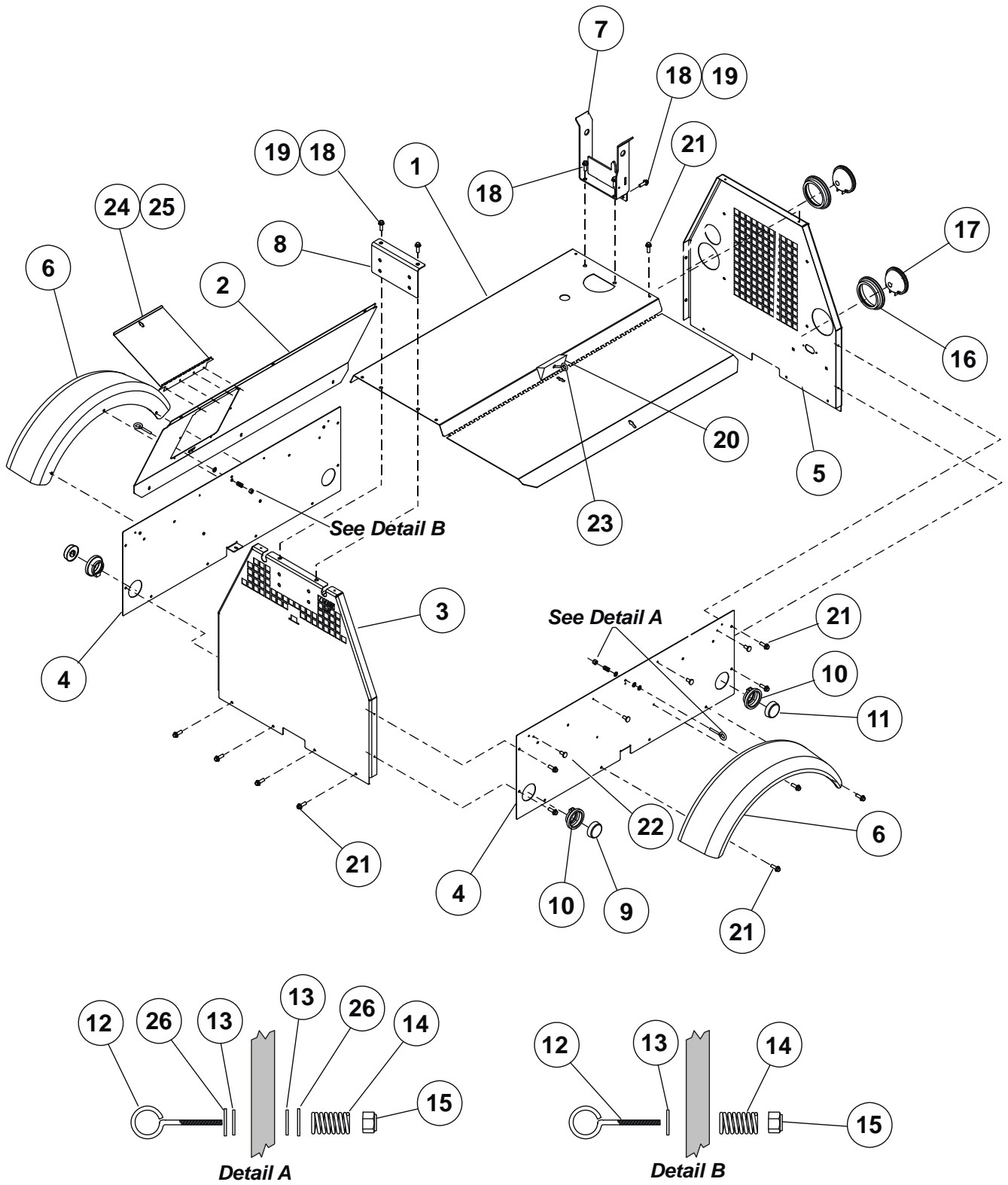
Tower Brackets



Tower Brackets

ITEM	COMM. NO.	DESCRIPTION	QTY	DIMENSIONS/NOTES
1	46556363	Tube, Mast Retainer	1	
2	46602282	Rest, Tower	1	
3	36870020	Pin, 22.2 mm Dia. X 215 mm with Pull	1	
4	36794170	Pin, 5/16" Lynch	2	
5	36923258	Support, Tower	1	
6	36869253	Pin, 22.2 mm Dia. X 134 mm with Pull	2	
7	36885549	Spring, Flat	1	
8	36783009	Pulley, 3" Dia. X 5/8"	2	
9	36869246	Pin Clevis 9.5 mm Dia.	3	
10	36880995	Screw, Hex Flange M10 - 1.5 X 30	6	
11	36879195	Nut, Hex Flange M10 - 1.5	4	
12	36923852	U-Bolt, Square 5-1/2" X 1/2" - 13	2	
13	95935003	Washer, Flat Plain Type A Narrow 1/2"	4	
14	95923348	Nut, Hex Nylon Insert 1/2" - 13	4	
15	36843282	Rivet, 0.19" Dia. Stainless Steel	4	
16	36786218	Lanyard, Stainless Steel 1.6 mm X 355.6 mm	4	
17	54370754	L-Bolt, 1/2" - 13	1	
18	95928867	Pin, Cotter Extended Prong	3	
19	35271170	Screw, Hex M08 - 1.25 X 40	1	
20	36769743	Nut, Hex Prevailing Torque M08 - 1.25	1	
21	35312024	Nut, M10 - 1.5	2	

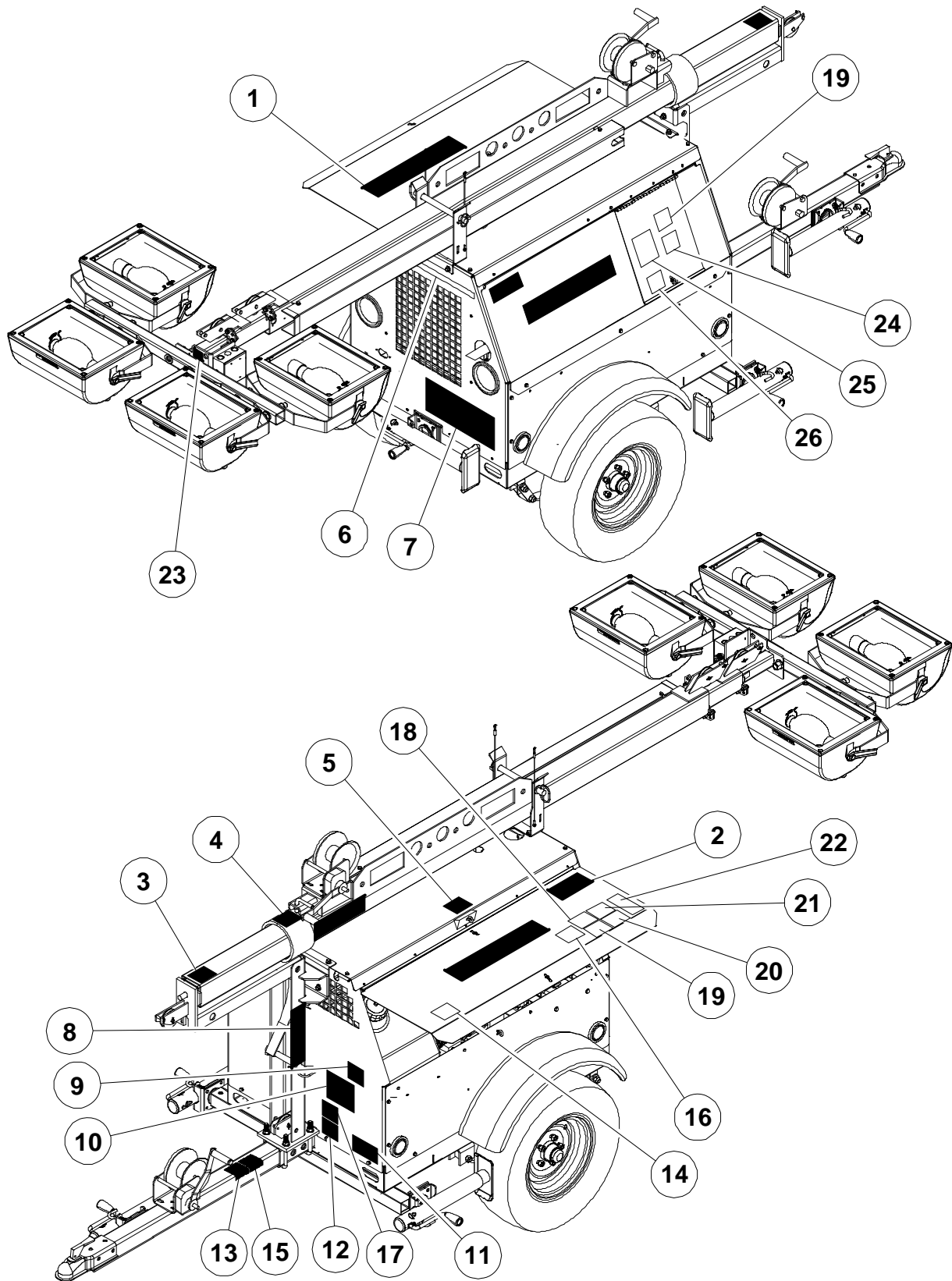
Enclosure



Enclosure

ITEM	COMM. NO.	DESCRIPTION	QTY	DIMENSIONS/NOTES
1	46611179	Panel, Top and Door Hinged	1	
2	46612839	Panel, Access	1	
3	46604221	Panel, Front	1	
4	46604224	Panel, Side	2	
5	46604223	Panel, Rear	1	
6	46600939	Fender	2	
7	46602282	Rest, Tower	1	
8	46602174	Bracket, Front Tower Mounting	1	
9	35367051	Lamp, Clearance Yellow	2	
10	36893634	Grommet, 1/4" Groove	4	
11	35367044	Lamp, Clearance Red	2	
12	35607829	Eyebolt, 1/4" - 20 X 2-1/2"	2	
13	36772028	Washer, Nylon Wear	3	
14	35607837	Spring, Eyebolt	2	
15	95923298	Nut, Hex Nylon Insert 1/4" - 20	3	
16	36787968	Grommet, Reflector	2	
17	36788081	Lamp, Stop-Turn-Tail Combo	2	
18	36880995	Screw, Hex Flange M10 - 1.5 X 30	6	
19	36879195	Nut, Hex Flange M10 - 1.5	4	
20	23301070	Stop, Door	1	
21	36797652	Screw, Tapping M06 - 1.0 X 12	32	
22	36865293	Bumper, Rubber Door	4	
23	23301062	Eyebolt, 1/4" - 20 X 4"	1	
24	46612480	Door, Control Panel	1	
25	36843282	Rivet, 0.19" Dia. Stainless Steel	4	
26	95935029	Washer, Flat Plain Type A Narrow 1/4"	2	

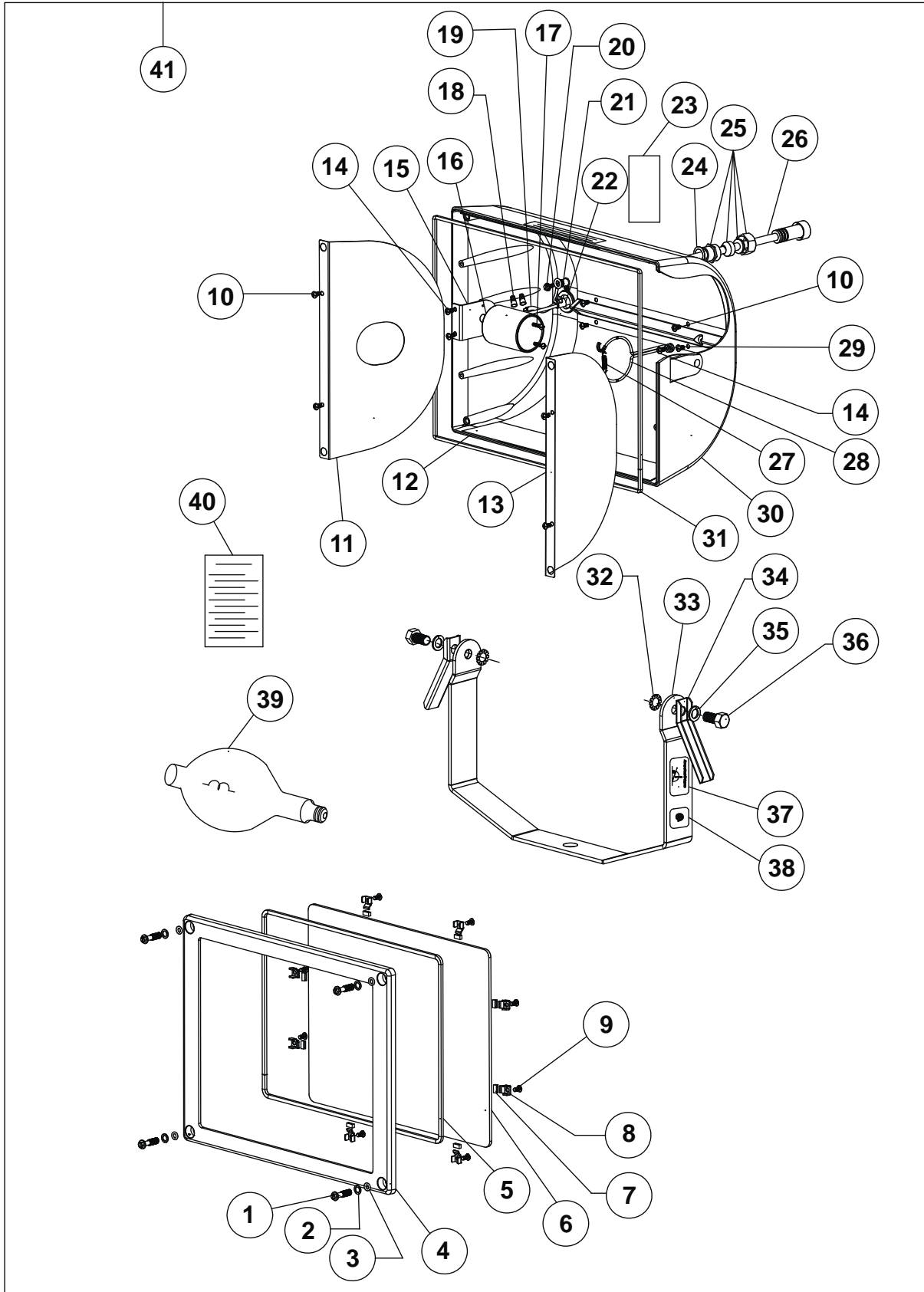
Decal Location - Exterior



Decal Location - Exterior

ITEM	COMM. NO.	DESCRIPTION	QTY	DIMENSIONS/NOTES
1	46573922	Decal, 24" Doosan	2	
2	46581783	Decal, LSC Gradient Model Number	2	
3	54604947	Decal, ISO Ultraviolet	1	
4	36524304	Decal, Tower Alignment	1	
5	54604954	Decal, ISO Lifting Instructions	1	
6	46556139	Decal, 12" Black Website	1	
7	46573859	Decal, 8" X 3" Tri-color	1	
8	23249071	Decal, 3-Part Warning	2	
9	46554745	Decal, Rollover Hazard	1	
10	36531564	Decal, Tower Operating	1	
11	23241045	Decal, VIN Doosan	1	
12	22743843	Decal, 13" Tire/ No Load	1	
13	54604913	Decal, ISO Ball Hitch	1	
14	46556990	Decal, Ultra Low Diesel Fuel	1	
15	46555565	Decal, ISO Collapse Jack Stand	1	
16	54568753	Decal, ISO Combustible	1	
17	54604921	Decal, ISO Towing Notice	1	
18	54604962	Decal, Hot Radiator Fill	1	
19	54605027	Decal, Hazardous Voltage	2	
20	54568761	Decal, ISO Hot Pressurized Fluid	1	
21	54568779	Decal, Rotating Fan	1	
22	54640008	Decal, Doosan Oil	1	
23	36894608	Decal, Red Reflector	1	
24	54568787	Decal, ISO Improper Operation	1	
25	54630041	Decal, ISO Light Tower Operation Instruction	1	
26	46623801	Decal, Turn Lights Off	1	

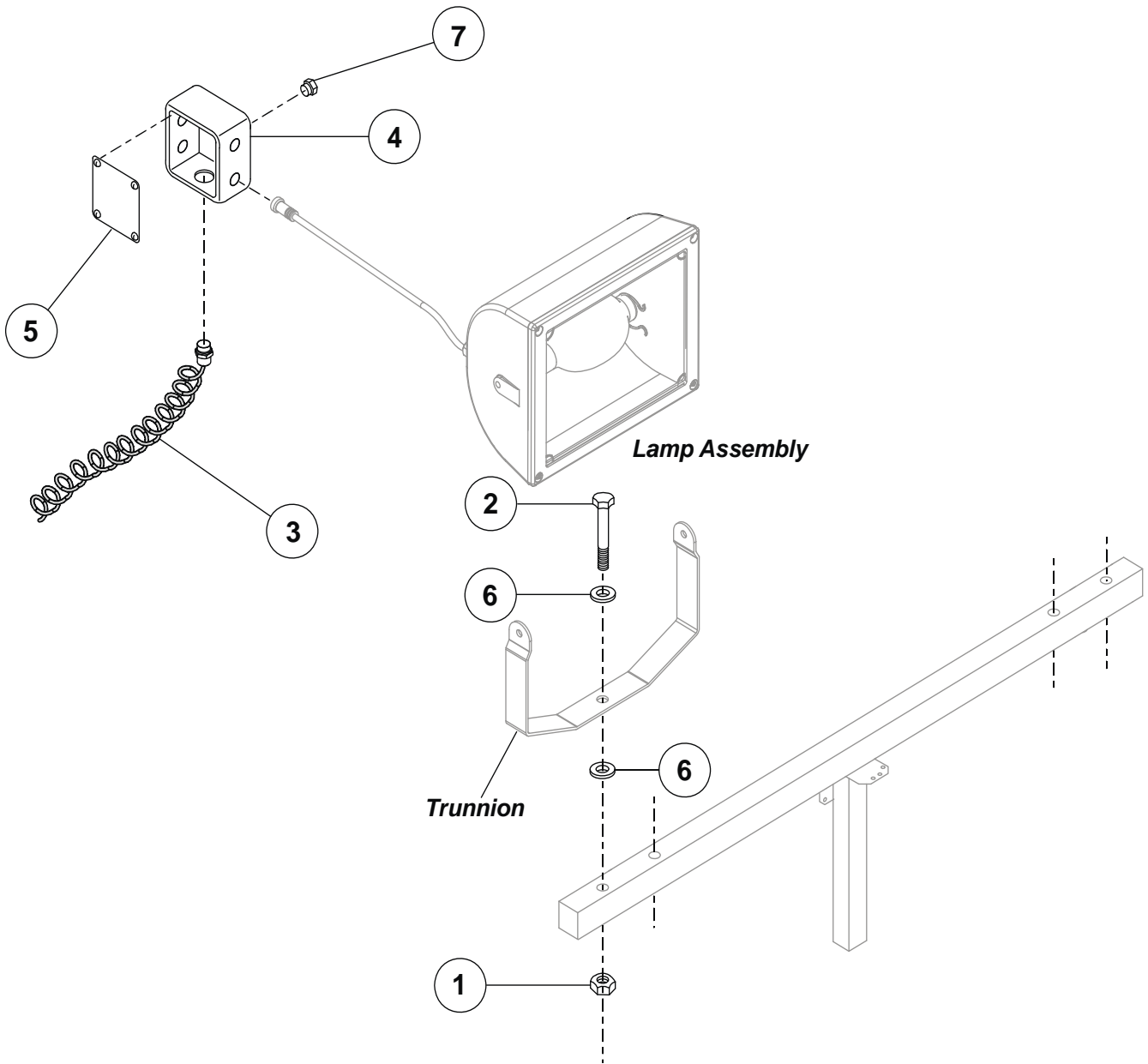
Lamp / Socket Assembly



Lamp / Socket Assembly

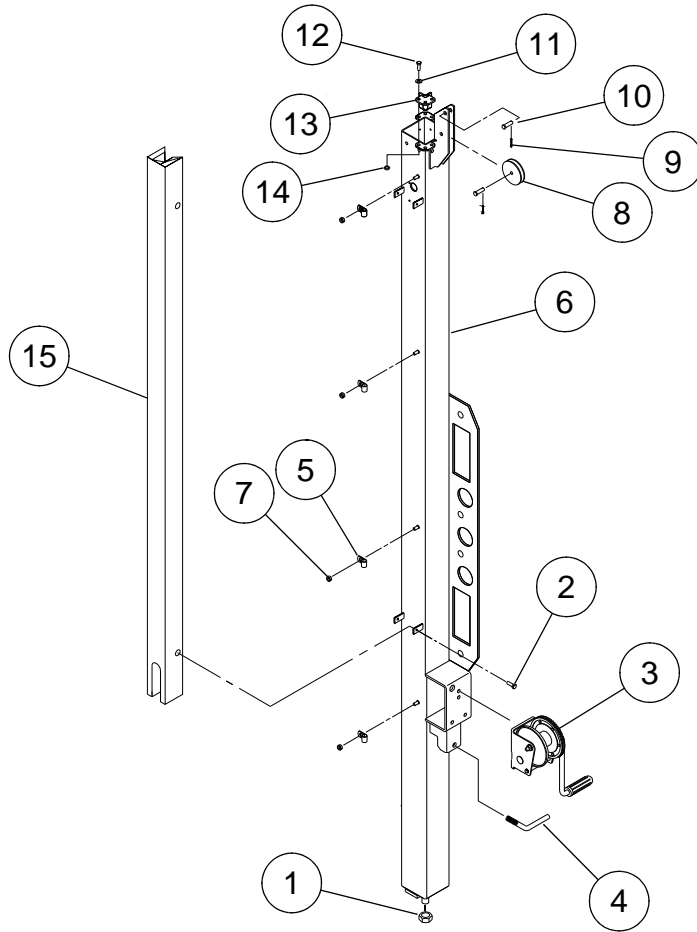
ITEM	COMM. NO.	DESCRIPTION	QTY	DIMENSIONS/NOTES
1	46497236	Screw, Top Frame	4	
2	46497228	Washer, Flat	4	
3	46497210	Washer, Rubber	4	
4	46497202	Frame, Top	1	
5	46497194	Gasket, Glass/Lens	1	
6	46497186	Lens, Clear Glass	1	
7	23177371	Cover, Glass/Lens Clip	8	
8	23177371	Clip, Glass/Lens	8	
9	46497178	Screw, Glass/Lens Clip	8	
10	46497160	Screw, Reflector	8	
11	46497152	Reflector, Lamp Side	1	
12	46497145	Reflector, Main	1	
13	46497137	Reflector, Side	1	
14	46497129	Screw, Socket Bracket/Lamp	3	
15	46497111	Bracket, Socket	1	
16	23177397	Socket, 5kV	1	
17	46497103	Screw, Socket	2	
18	46497095	Connector, Wire	2	
19	46497087	Sleeving, Fiberglass	3	
20	46497079	Screw, Ground	1	
21	46497061	Washer, Star	1	
22	46497053	Spring, Strain Relief	1	
23	46497046	Pad, Insulation	1	
24	46497038	Gasket, Insulated Pad	1	
25	46497020	Joint, Threaded w/Bushing, Ring and Nut	1	
26	46497012	Cable, UL Listed Elect	1	Prior to S/N 470495
	46669375	Cable, UL Listed Elect	1	
27	46497004	Spring, Lamp	1	
28	46496998	Brace, Lamp	1	
29	46496980	Washer, Flat	1	
30	46496972	Housing, Base	1	
31	46496964	Gasket, Top Frame	1	
32	23177702	Washer, Large Star	2	
33	46496949	Yoke, Trunnion	1	
34	23177751	Handle, Adjustment	1	
35	23177710	Washer, Spring	2	
36	23177694	Screw, Yoke	2	
37	46496931	Label, Aiming	1	
38	46497657	Decal, CSA/UL Approval	1	
39	23084965	Lamp, 1000W MH Small	1	
	46633080	Lamp. 1000w MH, 12 ea / Box	1	Optional
40	46496923	Instruction Sheet, Flood Lamp	1	
41	46496907	Lamp Assembly, Complete (For 60Hz)	1	Prior to S/N 470495
	46669094	Lamp Assembly, Complete (For 60Hz)	1	
	46496907	Lamp Assembly, Complete (For 50Hz)	1	

Lights and Mounting



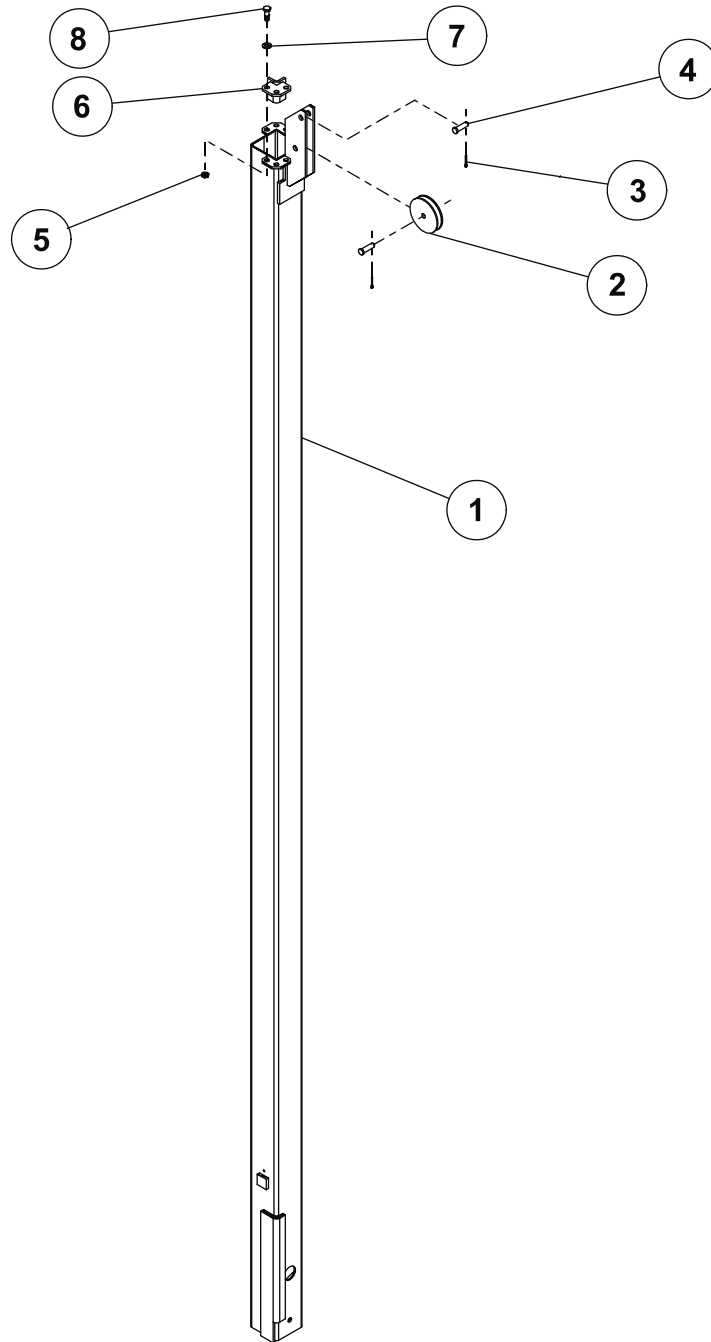
ITEM	COMM. NO.	DESCRIPTION	QTY	DIMENSIONS/NOTES
1	95923363	Nut, Hex Nylon Insert 3/4" - 10	4	
2	95995478	Capscrew Hex 3/4" - 10 X 4"	4	
3	22333215	Cord, Curly	1	
4	36885838	Box, Junction	1	
5	46628659	Cover, Junction Box	1	
6	95935011	Washer, Flat Plain Type A Narrow 3/4"	8	
7	36889186	Plug, 1/2" NPT Pipe	1	

Bottom Tower Assembly



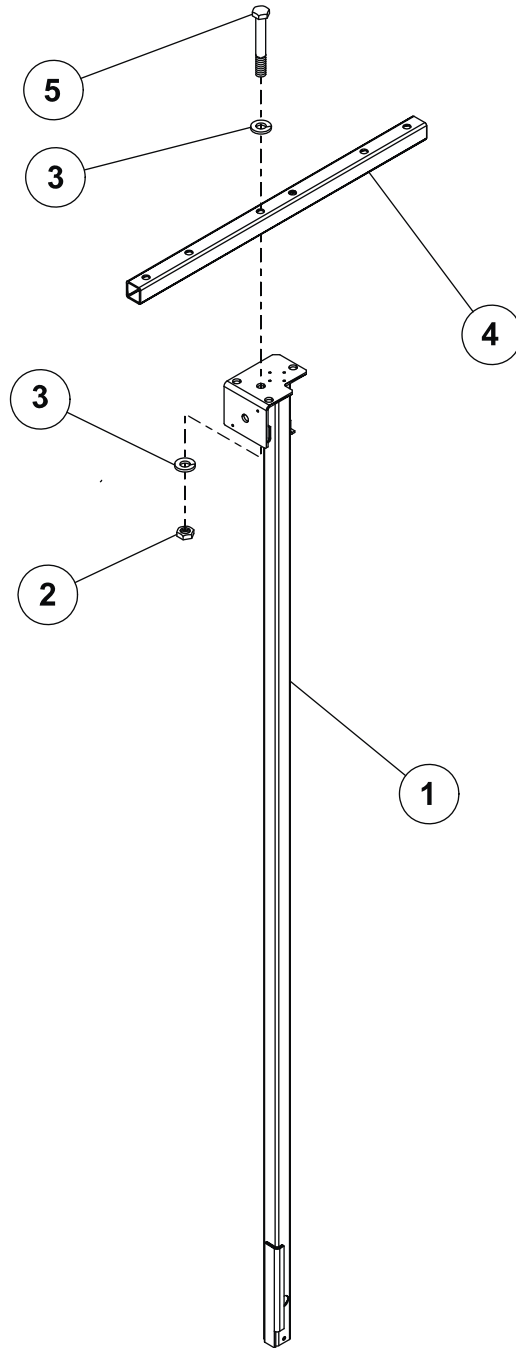
ITEM	COMM. NO.	DESCRIPTION	QTY	DIMENSIONS/NOTES
1	36881886	Nut, Hex Flange M08 - 1.25	1	
2	92368687	Screw, Tapping M06 - 1.0 X 14	4	
3	46656882	Winch, Manual	1	
	46671110	Handle, Winch	1	
4	54370754	L-Bolt, 1/2" - 13	1	
5	35225093	P-Clamp, 0.05 "	6	
6	22348825	Tower Assembly, Bottom	1	Prior to S/N 470495
	46668451	Tower Assembly, Bottom	1	
7	35278530	Nut, M08 - 1.25 Nylon Insert	4	
8	36783009	Pulley, 3" Dia. X 5/8"	1	
9	95928867	Pin, Cotter	1	
10	36783868	Pin, Clevis	1	
11	95934998	Washer, Flat Plain Type A Narrow 5/16"	4	
12	96702659	Screw, Hex M08 - 1.25 X 25	4	
13	22284079	Slide, Tower	2	
14	36769743	Nut, Hex Prevailing Torque M08 - 1.25	4	
15	22335053	Shroud, Cable	1	

Middle Tower Assembly



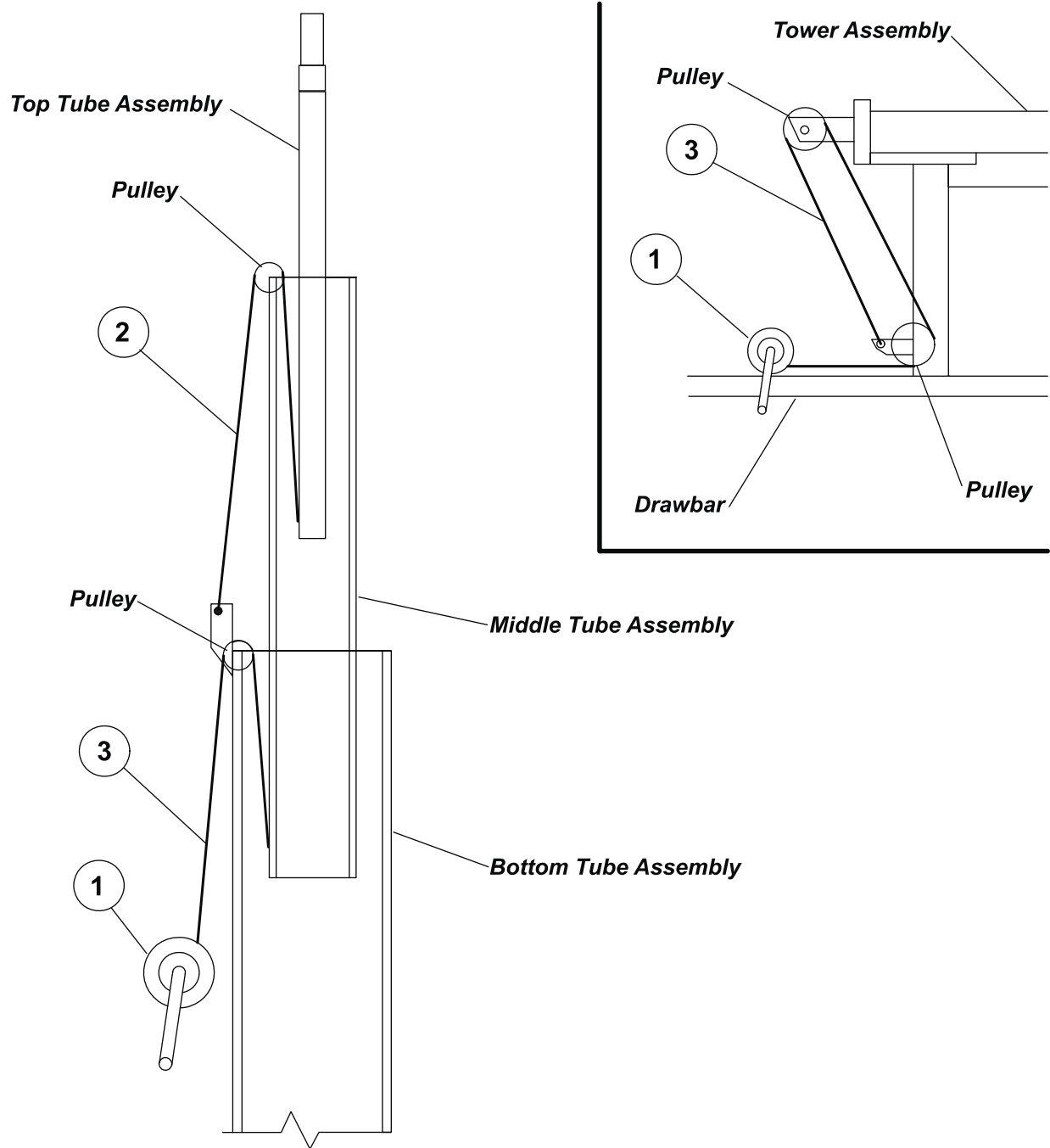
ITEM	COMM. NO.	DESCRIPTION	QTY	DIMENSIONS/NOTES
1	22284087	Tower Assembly, Middle	1	
2	36783009	Pulley, 3" Dia. X 5/8"	1	
3	95928867	Pin, Cotter	1	
4	36783868	Pin, Clevis	1	
5	36769743	Nut, Hex Prevailing Torque M08 - 1.25	4	
6	22284079	Slide, Tower	2	
7	95934998	Washer, Flat Plain Type A Narrow 5/16"	4	
8	96702659	Screw, Hex M08 - 1.25 X 25	4	

Top Tower Assembly



ITEM	COMM. NO.	DESCRIPTION	QTY	DIMENSIONS/NOTES
1	22284111	Tower Assembly, Top	1	
2	95923363	Nut, Hex Nylon Insert 3/4" - 10	2	
3	95935011	Washer, Flat Plain Type A Narrow 3/4"	4	
4	22284103	Crossbar	1	
5	95995478	Capscrew, Hex 3/4" - 10 X 4"	2	

Cable Routing



ITEM	COMM. NO.	DESCRIPTION	QTY	DIMENSIONS/NOTES
1	46656882	Winch, Manual	2	
2	36868545	Cable Assembly, Top	1	3430 mm
3	36876225	Cable Assembly, Middle	2	5460 mm

Recommended Spare Parts

ITEM	COMM. NO.	DESCRIPTION	QTY	DIMENSIONS/NOTES
	54480918	Oil, Protec 15W40	1 Gal.	
	36875938	Oil, Protec 15W40	5 Gal.	
	36866903	Oil, Protec 15W40	55 Gal.	
	36870566	Filter, Fuel		
	36845493	Fuel, Inline Strainer		
	36870574	Filter, Engine Oil		
	46606880	Element, Air Filter		
	46541561	Hose, Radiator Upper		
	46541579	Hose, Radiator Lower		
	46548715	Cap, Radiator Pressure 13 PSI		
	15908098	Belt, Engine Fan		
	36878379	Switch, Oil Pressure		
	36868479	Switch, Water Temperature		
	22776892	Solenoid, Fuel Stop 2-Wire		
	22986517	Starter, Kubota Engine		
	36888170	Alternator, Engine		
	46597699	Alternator, 6kW 60 Hz		
	46597700	Alternator, 6kW 50 Hz		
	23278997	Capacitor		
	23278963	Diodes		
	23278955	Bearing, Rear		
	46600539	Ballast Advance 60 Hz		
	43214097	Ballast Advance 50 Hz		
	36888683	Capcitor, Ballast		
	46557109	Hourmeter, Digital		
	35371798	Receptacle, GFCI Duplex 125V 20 Amp		60 Hz Control Panel
	43214204	Receptacle, 3-Wire 230V 50 Hz		50 Hz Control Panel
	46604860	Breaker, Circuit 1-Pole 20 Amp		60 Hz Control Panel
	36875953	Breaker, Circuit 2-Pole 25 Amp		50 Hz Control Panel
	43214295	Breaker, 2-Pole 10 Amp		50 Hz Control Panel
	43214352	Breaker, 2-Pole 16 Amp		50 Hz Control Panel
	46554856	Switch, Toggle DPDT 20 Amp		50 Hz Control Panel
	23084965	Lamp, 1000W		
	36786457	Assembly, Key Switch		
	35385533	Key, Switch		

NUMERICAL INDEX

COMM.NO.	PAGE	COMM.NO.	PAGE	COMM.NO.	PAGE
15908098	17	23278955	13	36769743	31
.....	43	15	39
22144521	7	43	40
22221246	17	23278963	13	36772028	33
22246268	9	15	36776128	10
22246797	29	43	11
22258446	22	23278971	13	36783009	31
22284079	39	23278989	13	39
.....	40	15	40
22284087	40	23278997	25	36783868	39
22284103	41	43	40
22284111	41	23279003	13	36786218	31
22333215	38	23279011	13	36786457	25
22335053	39	15	27
22348825	39	23279029	13	43
22743843	35	23279037	13	36786671	10
22759278	25	15	11
.....	27	23279045	13	36787968	33
22776892	17	15	36788081	33
.....	43	23279060	13	36794170	31
22885016	9	15	36797652	21
22885024	9	23301062	33	29
22885040	9	23301070	33	33
22885057	9	35221339	23	36843282	31
22885065	9	35225093	21	33
22885073	9	29	36845493	19
22885081	9	39	43
22885115	9	35271170	31	36848224	7
22885131	9	35273366	17	36860005	29
22888309	9	35278530	39	36865293	33
22907810	17	35279025	7	36866903	43
22986517	17	10	36868479	43
.....	43	11	36868545	42
23084965	37	17	36869246	31
.....	43	19	36869253	31
23177371	37	35282565	9	36870020	31
23177397	37	35296342	19	36870566	17
23177694	37	35300771	21	43
23177702	37	35304047	7	36870574	17
23177710	37	10	43
23177751	37	11	36875565	10
23241045	35	35312024	31	11
23249071	35	35315274	9	36875938	43
23276052	13	35363498	19	36875953	27
.....	15	35367044	33	43
23278906	13	35367051	33	36876225	42
.....	15	35371798	25	36878379	43
23278914	13	43	36879195	31
.....	15	35384577	19	33
23278922	13	35385533	43	36880995	31
.....	15	35607829	33	33
23278930	13	35607837	33	36881886	21
23278948	13	36136562	21	23
.....	15	36524304	35	39
		36531564	35	36884948	21
				36885549	31

NUMERICAL INDEX

COMM.NO.	PAGE	COMM.NO.	PAGE	COMM.NO.	PAGE
36885838	38	46497145	37	46597699	10
36888170	17	46497152	37		43
	43	46497160	37	46597700	11
36888501	17	46497178	37		43
36888683	29	46497186	37	46599505	7
	43	46497194	37	46600299	29
36889186	38	46497202	37	46600300	29
36889608	21	46497210	37	46600419	29
	23	46497228	37	46600539	29
36893634	33	46497236	37		43
36893790	25	46497335	10	46600939	33
	27		11	46601139	23
36894608	35	46497657	37	46601140	17
36898096	21	46541504	17	46601141	21
	25	46541561	21	46601201	19
	27		43	46601579	25
36898104	21	46541579	43	46602174	33
	25	46543054	15	46602282	31
	27	46543062	15		33
36899037	17	46543088	15	46602600	29
36923241	7	46543096	15	46603299	19
36923258	31	46543104	13	46604219	29
36923852	31		15	46604221	33
43214097	29	46544508	9	46604223	33
	43	46544516	9	46604224	33
43214204	27	46544524	9	46604419	19
	43	46544532	9	46604799	7
43214295	27	46544540	9	46604839	7
	43	46544557	9	46604840	7
43214352	27	46544565	9	46604860	25
	43	46545976	29		43
43214493	27	46546032	21	46604862	25
46496352	25	46546594	7	46605079	21
	27	46547295	21	46605700	27
46496907	37	46548186	17	46606879	23
46496923	37	46548715	21	46606880	23
46496931	37		43		43
46496949	37	46548806	29	46606881	23
46496964	37	46549457	27	46609319	29
46496972	37	46551868	17	46610523	19
46496980	37	46554745	35	46610799	25
46496998	37	46554856	27		27
46497004	37		43	46610873	25
46497012	37	46555565	35	46610874	27
46497020	37	46556139	35	46611179	33
46497038	37	46556150	7	46611999	25
46497046	37	46556363	31		27
46497053	37	46556990	35	46612480	33
46497061	37	46557109	25	46612839	33
46497079	37		27	46612841	25
46497087	37		43	46612842	27
46497095	37	46573859	35	46612999	23
46497103	37	46573922	35	46613000	23
46497111	37	46581783	35	46613001	23
46497129	37	46592220	19	46613460	23
46497137	37	46597439	17	46616639	19

NUMERICAL INDEX

COMM.NO.	PAGE	COMM.NO.	PAGE	COMM.NO.	PAGE
46616919	7	95928867	31		
46619639	25	39		
.....	27	40		
46619641	25	95930517	27		
.....	27	95934550	29		
46620110	25	95934998	39		
46622559	7	40		
46623221	25	95935003	7		
46623222	17	31		
46623223	27	95935011	38		
46623801	35	41		
46624261	21	95935029	33		
46628659	38	95935037	7		
46633080	37	17		
46656882	7	29		
.....	39	95942520	27		
.....	42	95942553	25		
46664305	9	27		
46667060	29	95942637	25		
46667061	29	27		
46668451	39	95995478	38		
46669094	37	41		
46669239	25	96702659	39		
46669241	25	40		
46669315	25	96715065	7		
46669375	37	96726435	7		
46671110	39	96727896	7		
46673819	21	96728431	7		
46678671	17	96730411	17		
54370754	31	96737564	29		
.....	39				
54388483	29				
54429295	10				
.....	11				
54480918	43				
54518758	7				
54568753	35				
54568761	35				
54568779	35				
54568787	35				
54604913	35				
54604921	35				
54604947	35				
54604954	35				
54604962	35				
54605027	35				
54630041	35				
54640008	35				
92368687	21				
.....	29				
.....	39				
95235031	21				
95923298	33				
95923348	31				
95923363	38				
.....	41				

NUMERICAL INDEX

COMM.NO.	PAGE	COMM.NO.	PAGE	COMM.NO.	PAGE

WORD INDEX

A

Adapter	
Fuel Solenoid	17
Alternator	
6kW 50 Hz	11, 43
6kW 60 Hz	10, 43
Engine	17, 43
Assembly	
Air Cleaner	23
Ballast Box 50 Hz	29
Ballast Box 60 Hz	29
Battery Holddown	29
Chain/Hook 5/16"	7
Control Box 50 Hz	27
Control Box 60 Hz	25
Hub	9
Key Switch	27, 43
Radiator	21
Rotor	13, 15
Attachment	
Clip	23

B

Ballast Advance 50 Hz	29, 43
Ballast Advance 60 Hz	29, 43
Ballast Box 50 Hz	29
Ballast Box 60 Hz	29
Band	
Closing	13, 15
Battery	
12V Group 24	29
Beam	
Axle	9
Bearing	
Rear	13, 15, 43
Belt	
Engine Fan	17, 43
Board	
Terminal	13, 15
Bolt	
Cover Stay	13, 15
Shackle 9/16" - 18 X 3-1/2"	9
Bottle	
Recovery	21
Box	
Junction	38
Brace	
Lamp	37
Bracket	
DE	13, 15
Engine Intake	17
Fan Guard	21
Front Tower Mounting	33
Fuel Tank Mounting	19
NDE	13, 15
Radiator Mounting	21
Socket	37

Breaker	
2-Pole 10 Amp	27, 43
2-Pole 16 Amp	27, 43
Circuit 1-Pole 20 Amp	25, 43
Circuit 2-Pole 25 Amp	27, 43
Circuit Push to Reset 15 Amp	25

Bumper	
Rubber Door	33
Bushing	
Nitrile	19

C

Cable	
Battery Negative	29
Battery Positive	29
UL Listed Elect	37
Cable Assembly	
Middle	42
Top	42

Cap	
Dust	9
Overflow	21
Radiator Pressure 13 PSI	21, 43

Capacitor	43
25 mf	25
35 mf	27
Ballast	29

Capcitor	
Ballast	43

Capscrew	
Hex 3/4" - 10 X 4"	41
Capscrew Hex 3/4" - 10 X 4"	38

Clamp	
1/2" Rubber Coated Support	21
7/16" Hose	21
Hose	23
Hose 1/4" I.D.	19
Hose Worm Drive	21
Support 1/2" I.D.	29

Clip	
Glass/Lens	37

Cone	
Bearing Outer	9

Connector	
Wire	37

Cord	
Curly	38

Coupler	
2" Ball	7

Cover	
Ballast Box	29
Glass/Lens Clip	37
Junction Box	38
Rear	27
Top	13, 15

Crossbar	41
----------	----

Cup	
Bearing Outer	9

WORD INDEX

D

Decal	
12" Black Website	35
13" Tire/ No Load	35
24" Doosan	35
3-Part Warning	35
8" X 3" Tri-color	35
Alternator Connect	27
Alternator Connector	25
Control Panel	25
Control Panel 50 Hz	27
CSA/UL Approval	37
Doosan Oil	35
Hazardous Voltage	35
Hot Radiator Fill	35
ISO Ball Hitch	35
ISO Collapse Jack Stand	35
ISO Combustible	35
ISO Hot Pressurized Fluid	35
ISO Improper Operation	35
ISO Lifting Instructions	35
ISO Light Tower Operation Instruction	35
ISO Towing Notice	35
ISO Ultraviolet	35
LSC Gradient Model Number	35
Red Reflector	35
Rollover Hazard	35
Rotating Fan	35
Tower Alignment	35
Tower Operating	35
Turn Lights Off	35
Ultra Low Diesel Fuel	35
VIN Doosan	35
Diodes	13, 15, 43
Door	
Control Panel	33
Drawbar	7

E

Element	
Air Filter	23, 43
Enclosure	
Control	25
End Cap	
Air Cleaner with Clips	23
Engine	
Kubota 1005 Tier 4 (E83 E84)	17
Kubota 1005 Tier 4 (G08 G09)	17
Eyebolt	
1/4" - 20 X 2-1/2"	33
1/4" - 20 X 4"	33

F

Fan	13, 15
Kubota Engine	17

Fender	33
Filter	
Engine Oil	43
Fuel	17, 43
Inline Fuel	19
Oil	17
Flange	
Interchangeable	13, 15
Frame	
LSCWKUB	7
Top	37
Fuel	
Inline Strainer	43
Fuel Cap	
Green Vented with Tether	19

G

Gasket	
Exhaust	22
Glass/Lens	37
Insulated Pad	37
Top Frame	37
Grommet	
1/4" Groove	33
Blind/Plug	25, 27
Reflector	33
Guard	
Fan	21

H

Handle	
Adjustment	37
Winch	39
Harness	
Ballast LSC 50 Hz	29
Ballast LSC 60 Hz	29
Control Panel LSC	25
Control Panel LSC Kubota 50 Hz	27
Kubota Engine	17
Trailer 2-Light with 4-Pin Connector	7
Heater	
Block 400W 120V	17
Hitch	
Dual	7
Hook	
Lifting	13, 15
Hose	
Engine Intake	23
Fuel 3/16" I.D.	19
Fuel 5/16" I.D.	19
Radiator Lower	21, 43
Radiator Upper	21, 43
Hourmeter	
Digital	25, 27, 43
Housing	
Base	37

WORD INDEX

I		
Instruction Sheet		
Flood Lamp	37
Isolator		
180 lb.	17
250 lb.	10, 11
J		
Jack		
Sidewind	7
Top Wind	7
J-Bolt		
1/4" - 20 X 9-1/2"	29
Joint		
Threaded w/Bushing		
Ring and Nut	37
Jumper		
Flat Slip On	25, 27
K		
Key		
Switch	43
L		
Label		
Aiming	37
ETL	25, 27
Lamp		
1000W	43
1000W MH Small	37
Clearance Red	33
Clearance Yellow	33
Stop-Turn-Tail Combo	33
Lamp Assembly		
Complete (For 50Hz)	37
Complete (For 60Hz)	37
Lamp. 1000w MH		
12 ea / Box	37
Lanyard		
Stainless Steel 1.6 mm X 355.6 mm	31
L-Bolt		
1/2" - 13	31, 39
Lens		
Clear Glass	37
Link		
Shackle	9
M		
Main Body		
Air Cleaner	23
Mount		
Air Cleaner	23
Muffler	22
N		
Not Shown	7, 13, 15, 17, 25, 27, 29
Note		
if a new Control Panel Harness is required		
46623222 Engine Harness Must Also be Ordered		
or the Unit Will Not Function Properly.	25
Nut		
Cable Gland	13, 15
Hex Flange Lock M06 - 1.0	29
Hex Flange M06 - 1.0	25, 27
Hex Flange M08 - 1.25	23, 39
Hex Flange M10 - 1.5	31, 33
Hex Flange M6 - 1.0	21
Hex Flange M8 - 1.25	21
Hex Lock M12 -1.75	7
Hex Nylon Insert #6 - 32	27
Hex Nylon Insert #8 - 32	25, 27
Hex Nylon Insert 1/2" - 13	31
Hex Nylon Insert 1/4" - 20	33
Hex Nylon Insert 3/4" - 10	38, 41
Hex Nylon Insert M10 - 1.5	17
Hex Nylon Insert M12 - 1.75	7, 10, 11
Hex Nylon Insert M8 - 1.25	7
Hex Prevailing Torque M08 - 1.25	...	31, 39, 40
M08 - 1.25 Nylon Insert	39
M10 - 1.5	31
Shackle Bolt 9/16" - 18	9
Spindle	9
U-Bolt	9
Wheel	9
O		
Oil		
Protec 15W40	43
Option	7, 17
P		
Pad		
Insulation	37
Panel		
Access	33
Control 50 Hz	27
Control 60 Hz	25
Front	33
Rear	33
Side	33
Top and Door Hinged	33
Parts Ordering	3
P-Clamp		
0.05 "	39
Pin		
22.2 mm Dia. X 134 mm with Pull	31
22.2 mm Dia. X 215 mm with Pull	31
5/16" Lynch	31
Clevis	39, 40
Cotter	9, 39, 40
Cotter Extended Prong	31
Outrigger	7
Pin Clevis 9.5 mm Dia.	31

WORD INDEX

Plate	
Tie	9
Plates	
Disc Ring	13, 15
Plug	
1/2" NPT Pipe	38
Pulley	
3" Dia. X 5/8"	31, 39, 40

R

Receptacle	
230V 10 Amp	27
3-Wire 230V 50 Hz	27, 43
GFCI Duplex 125V 20 Amp	25, 43
Reflector	
Lamp Side	37
Main	37
Side	37
Rest	
Tower	31, 33
Rivet	
0.19" Dia. Stainless Steel	31, 33

S

Screw	
Glass/Lens Clip	37
Ground	37
Hex 3/8" - 16 X 3/4"	29
Hex Flange M08 - 1.25 X 25	23
Hex Flange M10 - 1.5 X 30	31, 33
Hex Flange M6 - 1.0 X 20	21
Hex Flange M8 - 1.25 X 25	21
Hex M08	17
Hex M08 - 1.25 X 25	39
Hex M08 - 1.25 X 40	31
Hex M08 with Captive Washer	22
Hex M10 - 1.25 X 20	10, 11
Hex M10 - 1.5 X 60	17
Hex M12 - 1.75 X 110	7
Hex M12 - 1.75 X 150	7
Hex M12 - 1.75 X 60	10, 11
Hex M8 - 1.25 X 100	7
Hex Washer Head Slot	
#8 - 32 X 3/8"	25, 27
M10 - 1.25 X 30 w/ Captive Lock Washer	17
M6 - 1.0 X 12	21
Pan Head Phillips #6 - 32 X 1/2"	27
Pan Head Phillips #6 - 32 X 1/4"	25
Pan Head Phillips #8 - 32 X 5/8"	27
Pan Head Phillips #8 - 32 X 5/8"	25
Reflector	37
Socket	37
Socket Bracket/Lamp	37
Tapping M06 - 1.0 X 12	29, 33
Tapping M06 - 1.0 X 14	29, 39
Tapping M06 - 1.0 X 20	25, 27
Tapping M6 - 1.0 X 14	21
Tapping M6 - 1.0 X 20	21
Taptite M08 - 1.25 X 20	7, 10, 11, 17, 19
Top Frame	37
Yoke	37
Screw. Hex M08 - 1.25 X 25	40
Seal	
Grease	9
Rear	13, 15
Shroud	
Cable	39
Sleeving	
Fiberglass	37
Slide	
Tower	39, 40
Snap Ring	
Jack	7
Socket	
5kV	37
Solenoid	
Fuel Stop 2-Wire	17, 43
Spacer	
Steel 11.1mm	7
Spare Parts	17

WORD INDEX

Spring	
Double Eye	9
Eyebolt	33
Flat	31
Lamp	37
Strain Relief	37
Starter	
Kubota Engine	17, 43
Stator	
Wound	13, 15
Stem	
Valve	9
Stop	
Door	33
Strap	
Ground 20" Braided	29
Stud	
Wheel 9/16" - 18 X 3"	9
Support	
Alternator	10, 11
Diode Heat Sink	13, 15
Engine	17
Tower	31
Switch	
Key	25
Oil Pressure	43
Toggle DPDT 20 Amp	27, 43
Water Temperature	43

T

Tank	
Fuel	19
Terminal Block	
6-Row	25, 27
Tire	
ST175/80D13	9
Tower Assembly	
Bottom	39
Middle	40
Top	41
Tube	
Fuel Pickup	19
Fuel Return	19
Mast Retainer	31
Outrigger	7

U

U-Bolt	9
Square 5-1/2" X 1/2" - 13	31

V

Valve	
Dust Ejector	23

W

Washer	
Flat	37
Flat Plain Type A Narrow 1/2"	7, 31
Flat Plain Type A Narrow 1/4"	33
Flat Plain Type A Narrow 3/4"	38, 41
Flat Plain Type A Narrow 3/8"	7, 17, 29
Flat Plain Type A Narrow 5/16"	39, 40
Large Star	37
Nylon Wear	33
Rubber	37
Snubbing	10, 11, 17
Spindle	9
Spring	37
Star	37
Wheel	
13"	9
Winch	
Manual	7, 39, 42

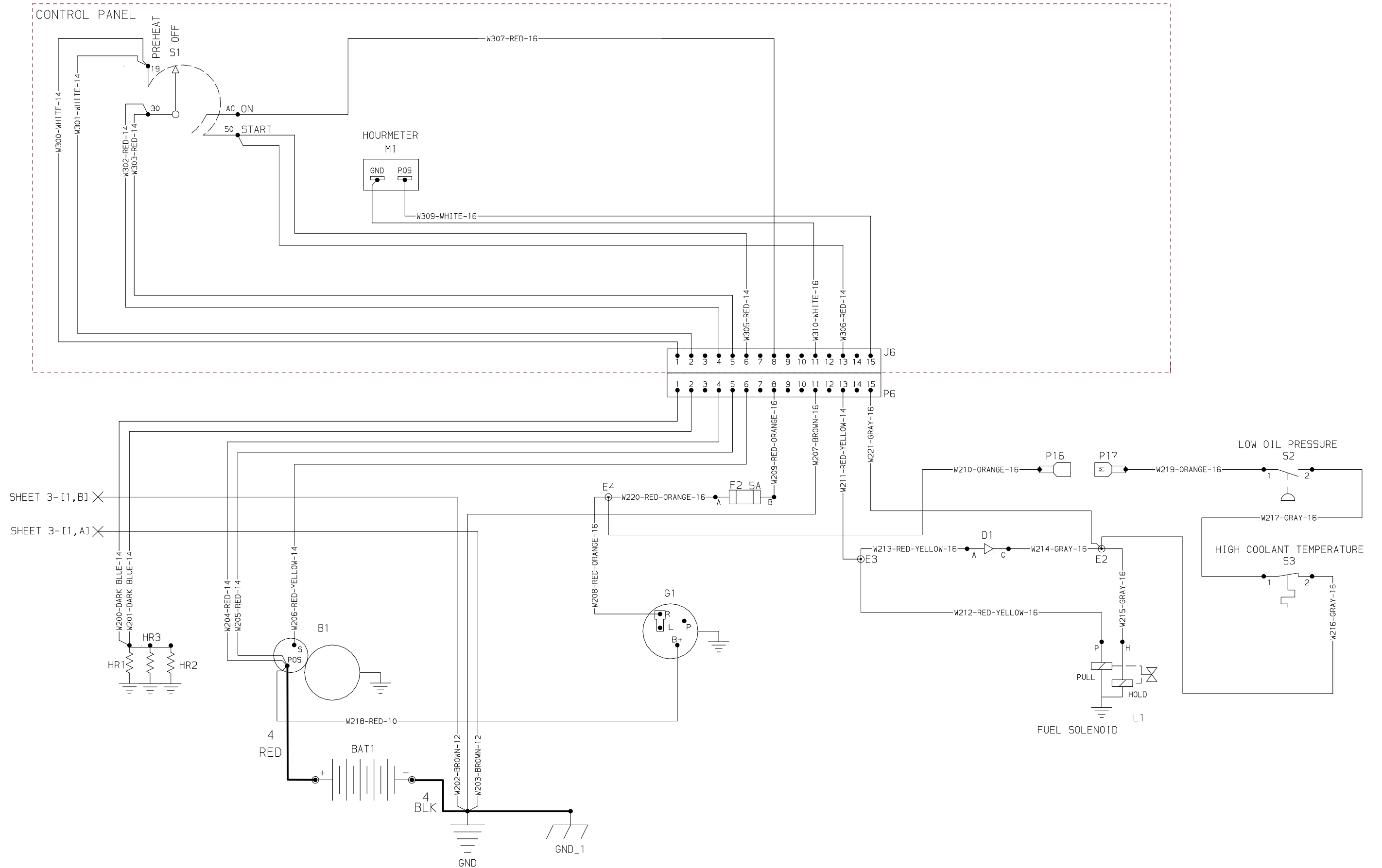
Y

Yoke	
Trunnion	37

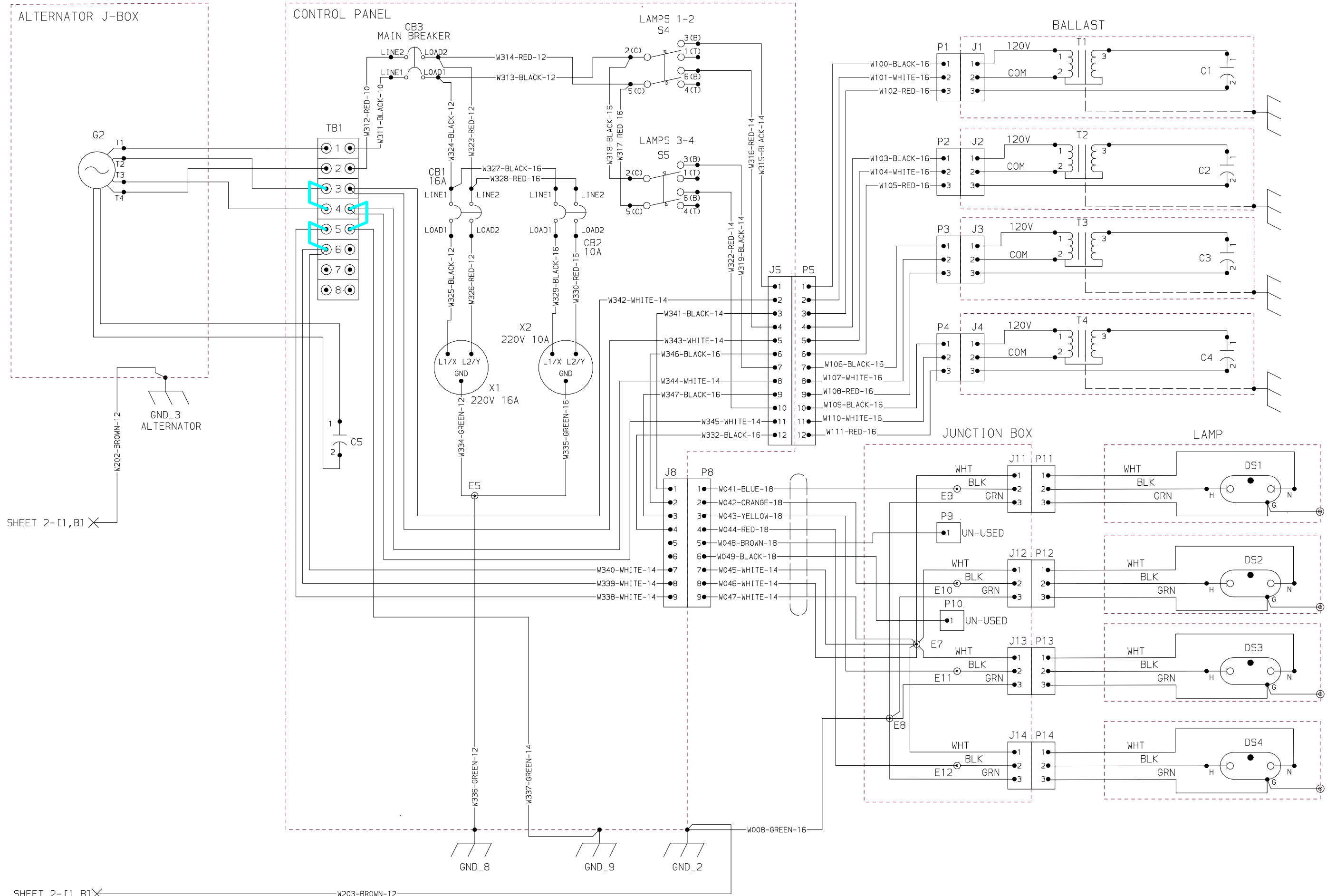
WORD INDEX



Wiring Diagrams



WIRING DIAGRAM, LSC 50 HZ, P/N 46623265

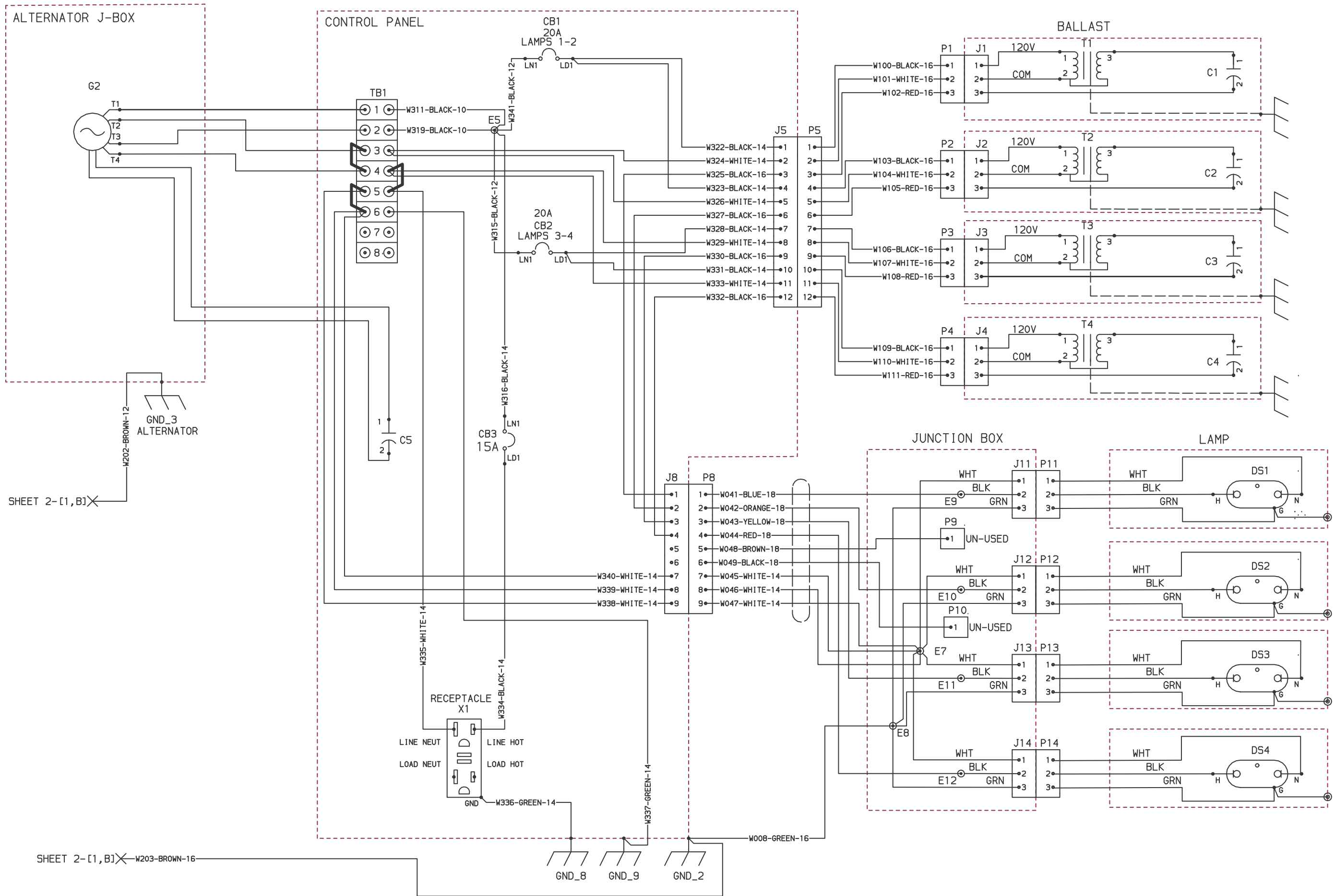


SHEET 2-[1,B] X

SHEET 2-[1,B] X

W203-BROWN-12

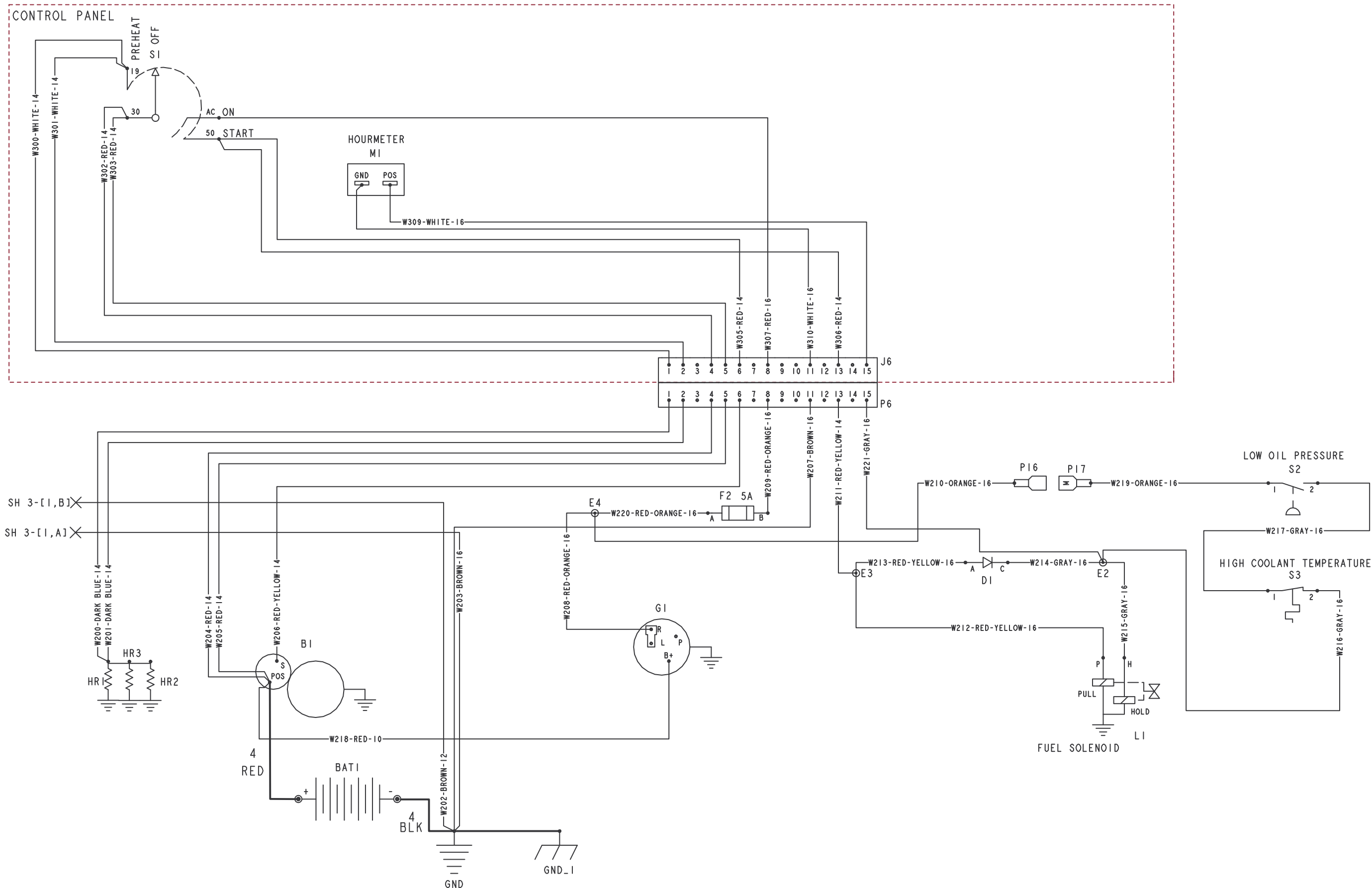
WIRING DIAGRAM, LSC 50 HZ, P/N 46623265



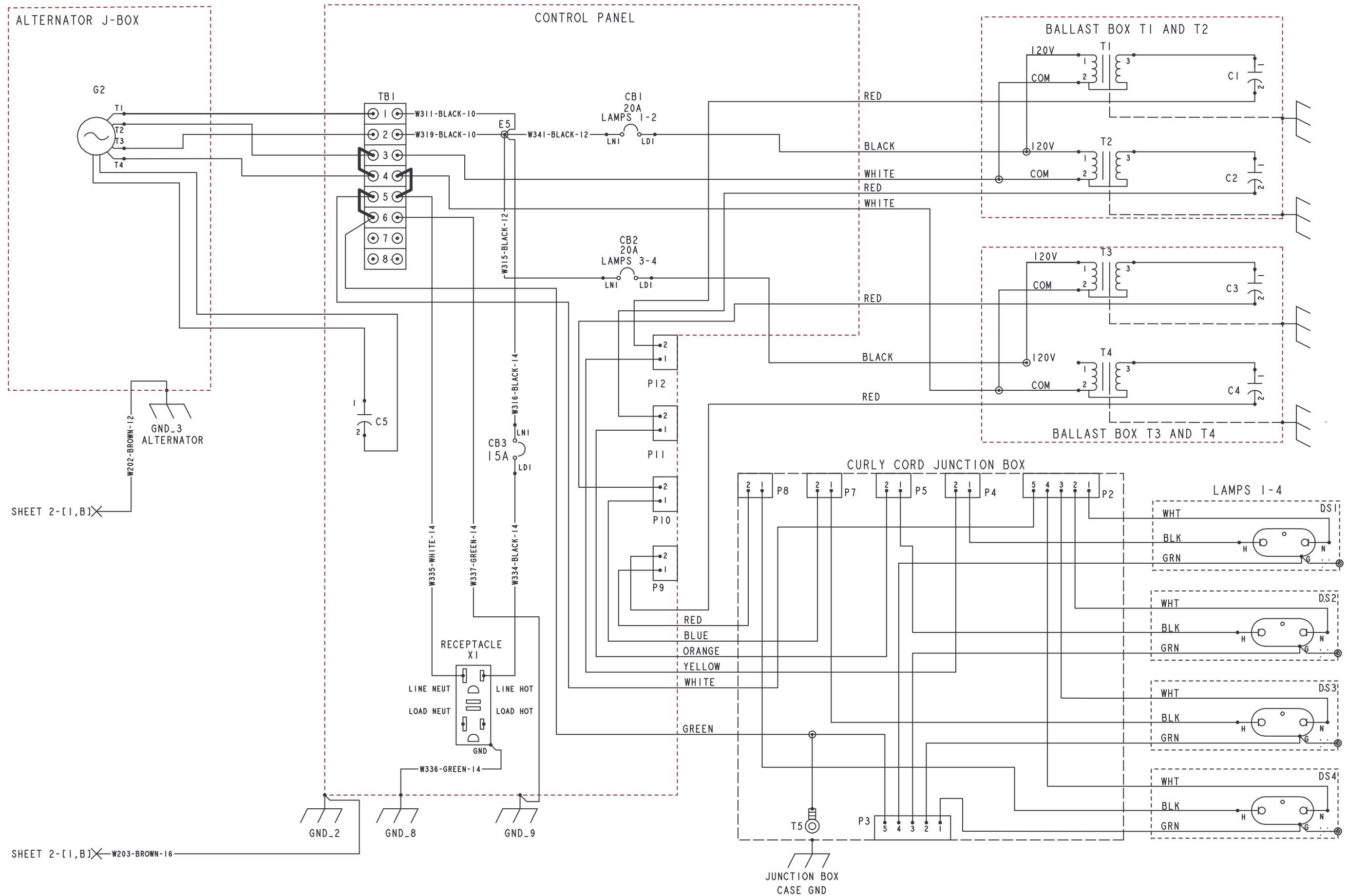
SHEET 2-[1,B]X

SHEET 2-[1,B]X-W203-BROWN-16

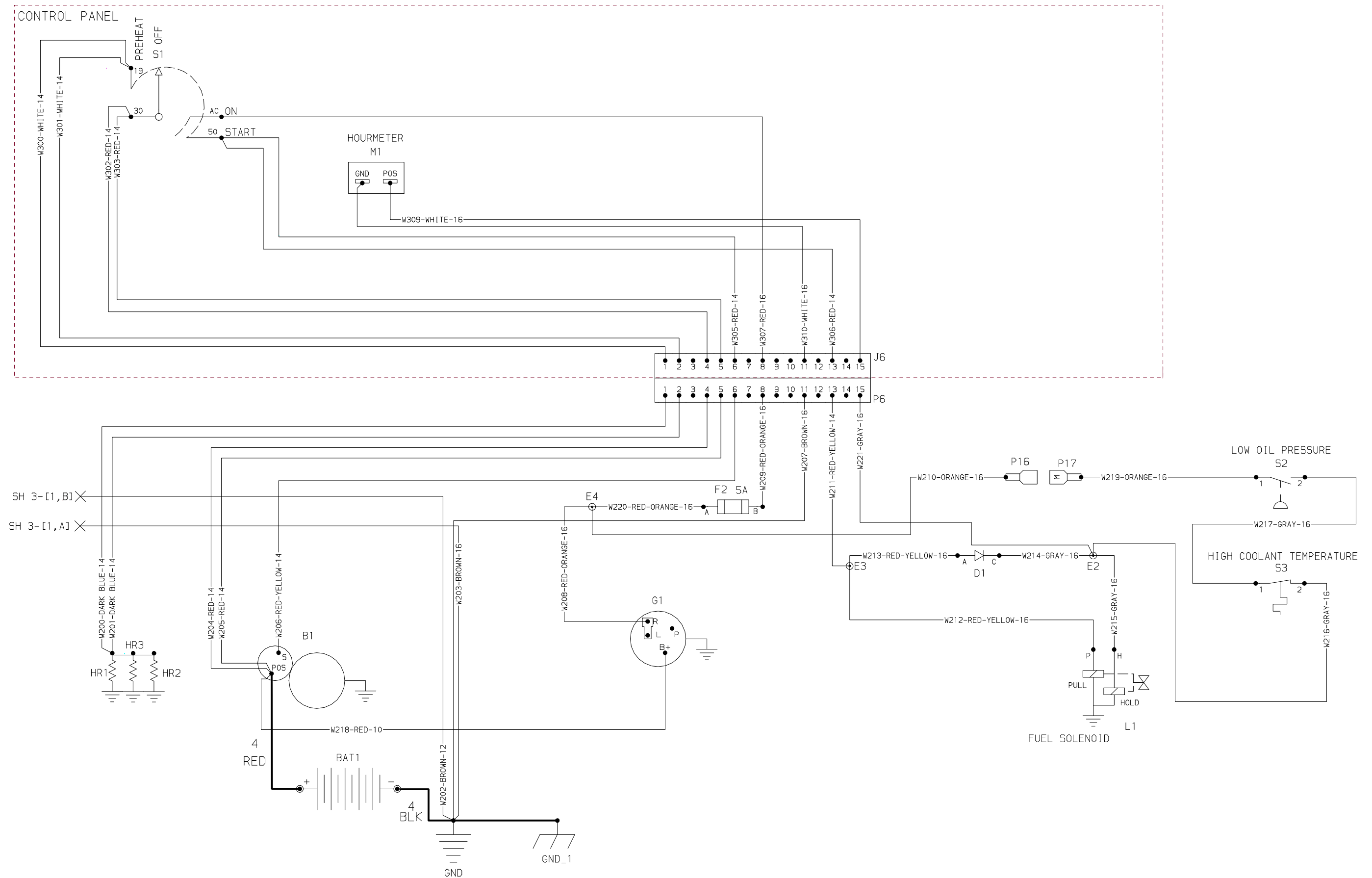
WIRING DIAGRAM LSC 60Hz PRIOR TO SN 470495 46623266 REV A



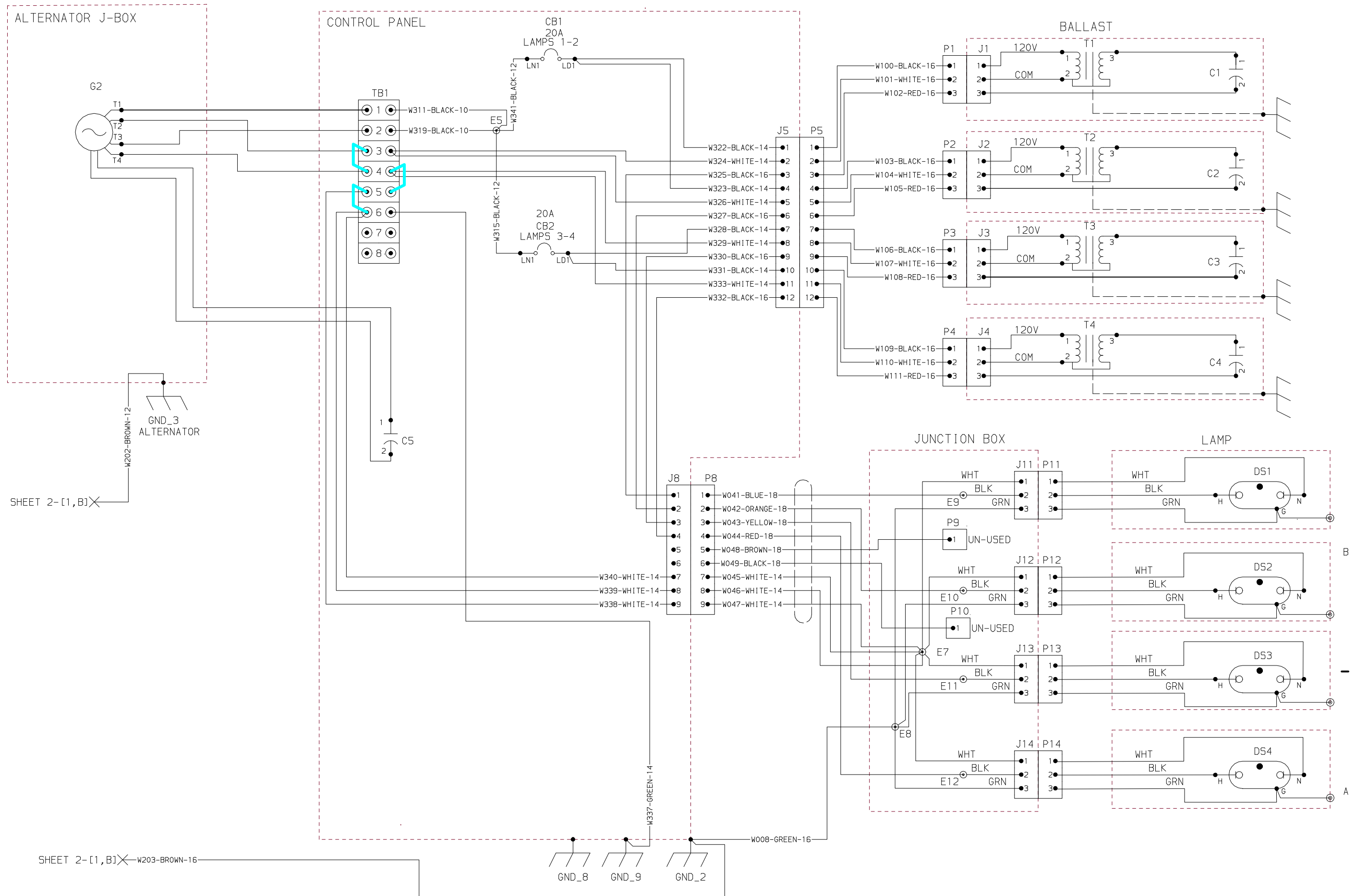
WIRING DIAGRAM LSC 60 Hz BEGIN WITH SN 470495 46669232 REV A



WIRING DIAGRAM LSC 60 Hz BEGIN WITH SN 470495 46669232 REV A



WIRING DIAGRAM, LSC 60 HZ, NO RECEPTACLES; P/N 46624895



WIRING DIAGRAM, LSC 60 HZ, NO RECEPTACLES; P/N 46624895



Doosan Infracore Portable Power
1293 Glenway Drive
Statesville, N.C. 28625
www.doosanportablepower.com

Doosan Infracore
Portable Power